



Trauma-Informed Networks of Care

California ACEs Aware Initiative

ACEs Aware Mission



To change and save lives by helping providers understand the importance of screening for Adverse Childhood Experiences and training providers to respond with trauma-informed care to mitigate the health impacts of toxic stress.

Presenters

Shannon Thyne, MD

Director of Pediatrics, Los Angeles County Department of Health Services

Artie Padilla

Senior Program Officer, Neighborhood Development, Central Valley Community Foundation

Ivonne Der Torosian, MPA

Vice President, Community Health and Well-Being, Saint Agnes Medical Center

Amy Parks, DSW, LCSW, CLEC

Coordinator of Developmental and Behavioral Pediatrics, Community Pediatrics, Adolescent Medicine, & Child Advocacy; Director Pediatric Healthy Steps, Department of Pediatrics, UCSF Fresno Medical Education Program

Agenda



1. Define and provide guidance on key elements of a Trauma-Informed Network of Care to respond to ACEs and toxic stress
2. Present strategies to establish a robust and effective system to respond to ACEs and mitigate the toxic stress response
3. Share learnings from Fresno County on building a Network of Care
4. Answer audience questions



Key Elements of a Trauma-Informed Network of Care

Shannon Thyne, MD

ACEs Aware: Building Trauma-Informed Network of Care



Raising Awareness

Train and expand awareness among Medi-Cal providers on ACE screening and response



Practice Change

Support implementation of ACE screening and response for Medi-Cal providers

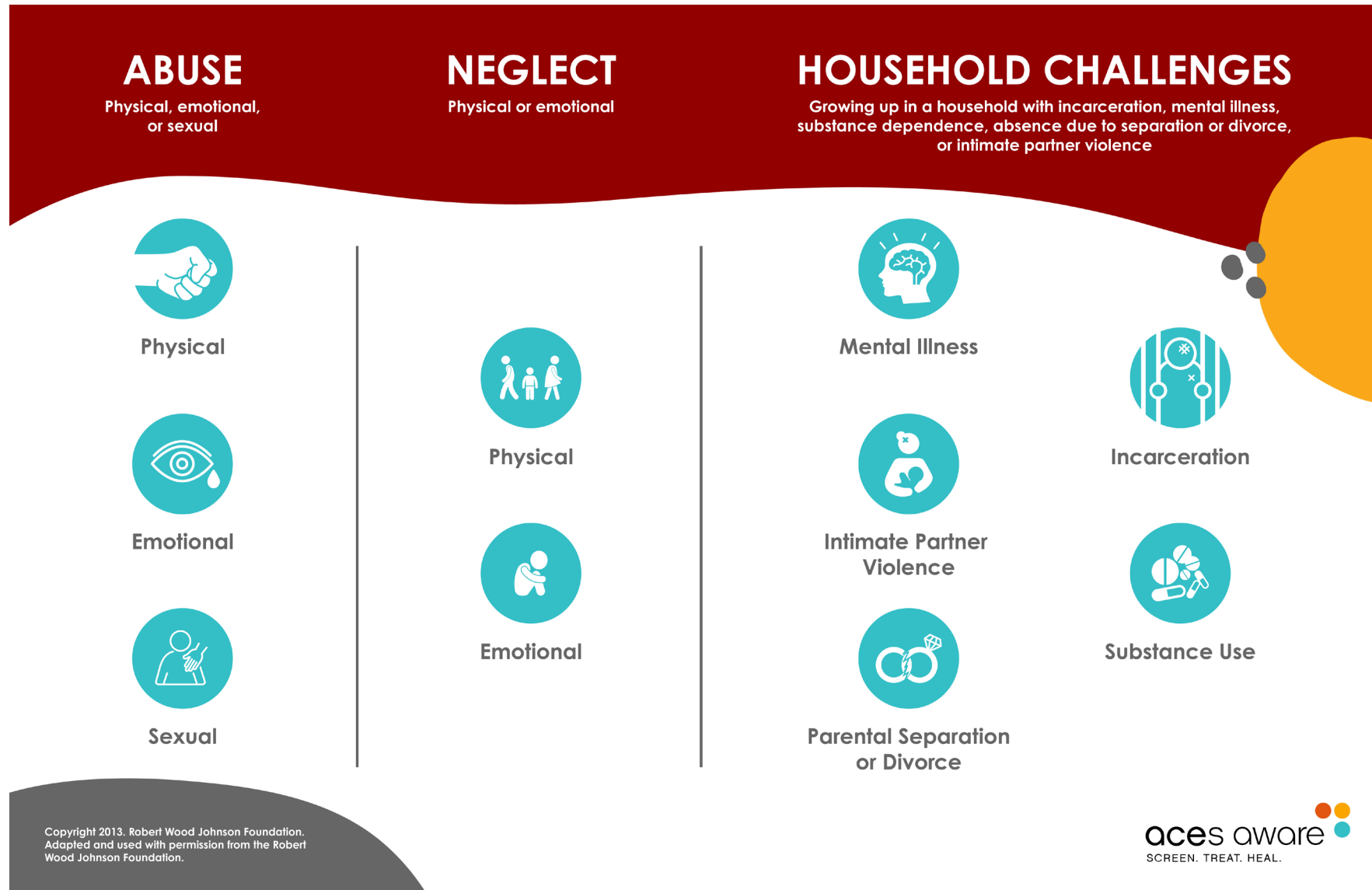


Network of Care

Support development of a functional network of care

Reduce ACEs and toxic stress by half in one generation

What are Adverse Childhood Experiences?



The Toxic Stress Response Defined



“Prolonged activation of the stress response systems that can disrupt the development of brain architecture and other organ systems, and increase the risk for stress-related disease and cognitive impairment, well into the adult years...”

– National Academies of Sciences, Engineering, and
Medicine

Source: National Academies of Sciences, Engineering, and Medicine. Vibrant and healthy kids: *Aligning science, practice, and policy to advance health equity*. Washington, DC: National Academies Press, 2019.; Nelson CA, Bhutta ZA, Burke Harris N, Danese A, Samara M. Adversity in childhood is linked to mental and physical health throughout life. *BMJ (Clinical Research Edition)* 2020; 371: m3048.

Trauma-Informed Network of Care



A **Trauma-Informed Network of Care** is a group of interdisciplinary health, education, and human service professionals and community members and organizations that support adults, children, and families by providing access to evidence-based “buffering” resources and supports that help to prevent, treat, and heal the harmful consequences of toxic stress.

Evidence-Based Buffering Resources



From the California Surgeon
General's Playbook at
COVID19.CA.gov

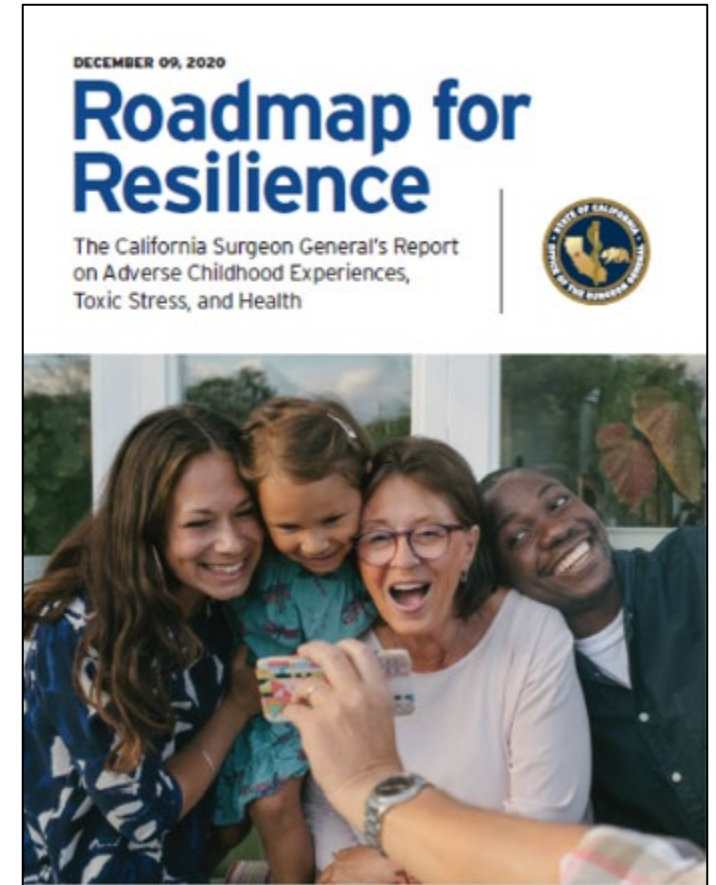


**Where do you
begin?**

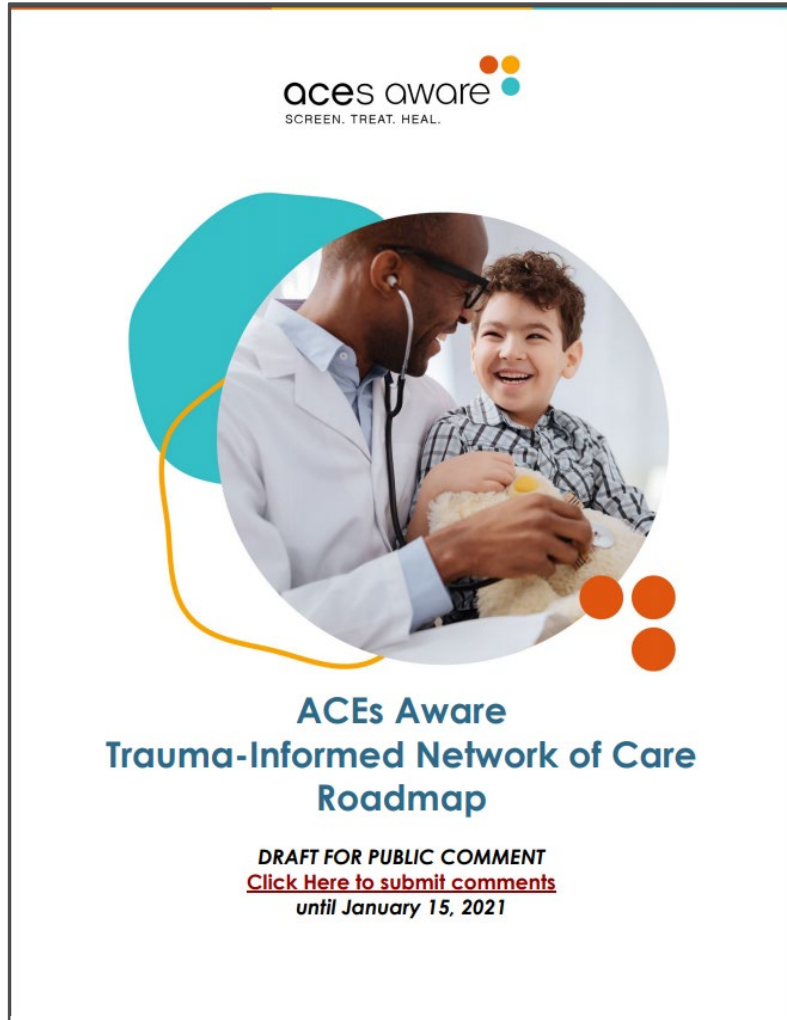
Highlights from the California Surgeon General's Report

The report includes:

- Clear articulation of how the science of toxic stress shows up within the population it supports
- The role of each sector in addressing/combating ACEs and toxic stress
- Robust list of specific Primary, Secondary and Tertiary prevention strategies that can be implemented
- Case studies of programs that highlight strong use of cross-sector integration and all three prevention strategies



Trauma-Informed Network of Care Roadmap



The **Network of Care Roadmap** provides practical steps that health care providers, clinics, community-based organizations, and social service agencies can take within their own communities to grow cross-sector Networks of Care that support providers, individuals, and families in preventing and addressing the impact of ACEs and toxic stress on health.

Case Study:

Building Trauma-Informed Network of Care in LA County

Who We Are

- ACEs-LA is a collaboration between LA County stakeholders, the Department of Health Services, and the state to build community resilience.

Our Mission

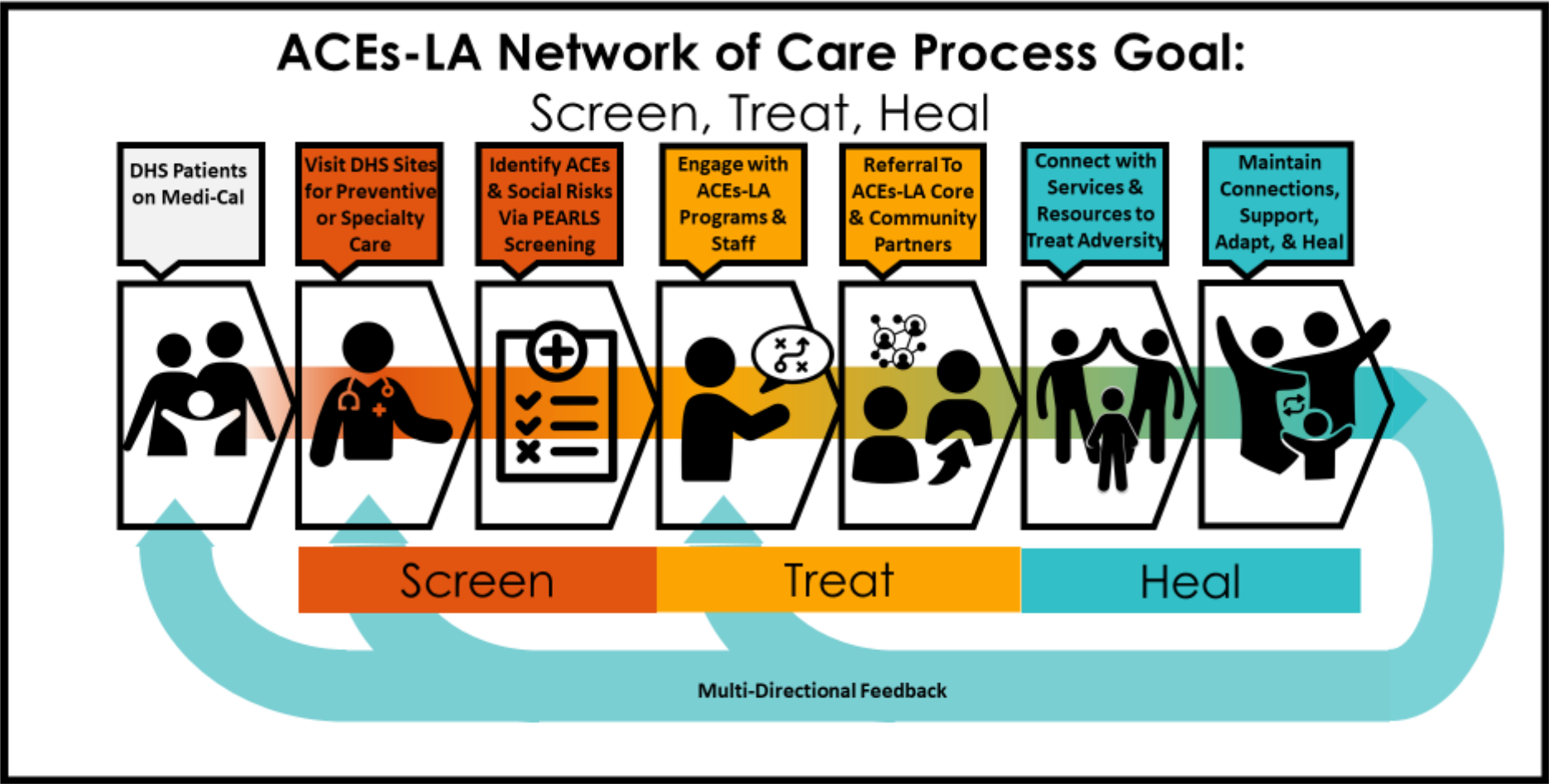
- Through screening, treating, and healing, we aim to improve the health of LA County's adults, children, and families, build creative connections, and inspire resilience.

Our Vision

- We strive to cultivate successful, healing connections that empower individuals and communities to achieve health and wellbeing.



Getting Ready



Key Elements of Our Network of Care

- Clinicians
- Connectors
- Conveners
- Community

... with community navigators as the “glue” and our children and families at the center of our efforts.

ACEs-LA NoC Organization Components – 4Cs



How can you do this in your setting?



1. Know where you are.
2. Know where you want to go.
3. Stick the gum and paper clips together.
4. Don't lose sight of where you want to go.
5. Be flexible.

Case Study: Fresno County Network of Care



Artie Padilla

Senior Program Officer, Neighborhood Development, Central Valley Community Foundation



Ivonne Der Torosian, MPA

Vice President, Community Health and Well-Being, Saint Agnes Medical Center



Amy Parks, DSW, LCSW, CLEC

Coordinator of Developmental and Behavioral Pediatrics, Community Pediatrics, Adolescent Medicine, & Child Advocacy; Director Pediatric Healthy Steps, Department of Pediatrics, UCSF Fresno Medical Education Program



About Fresno County

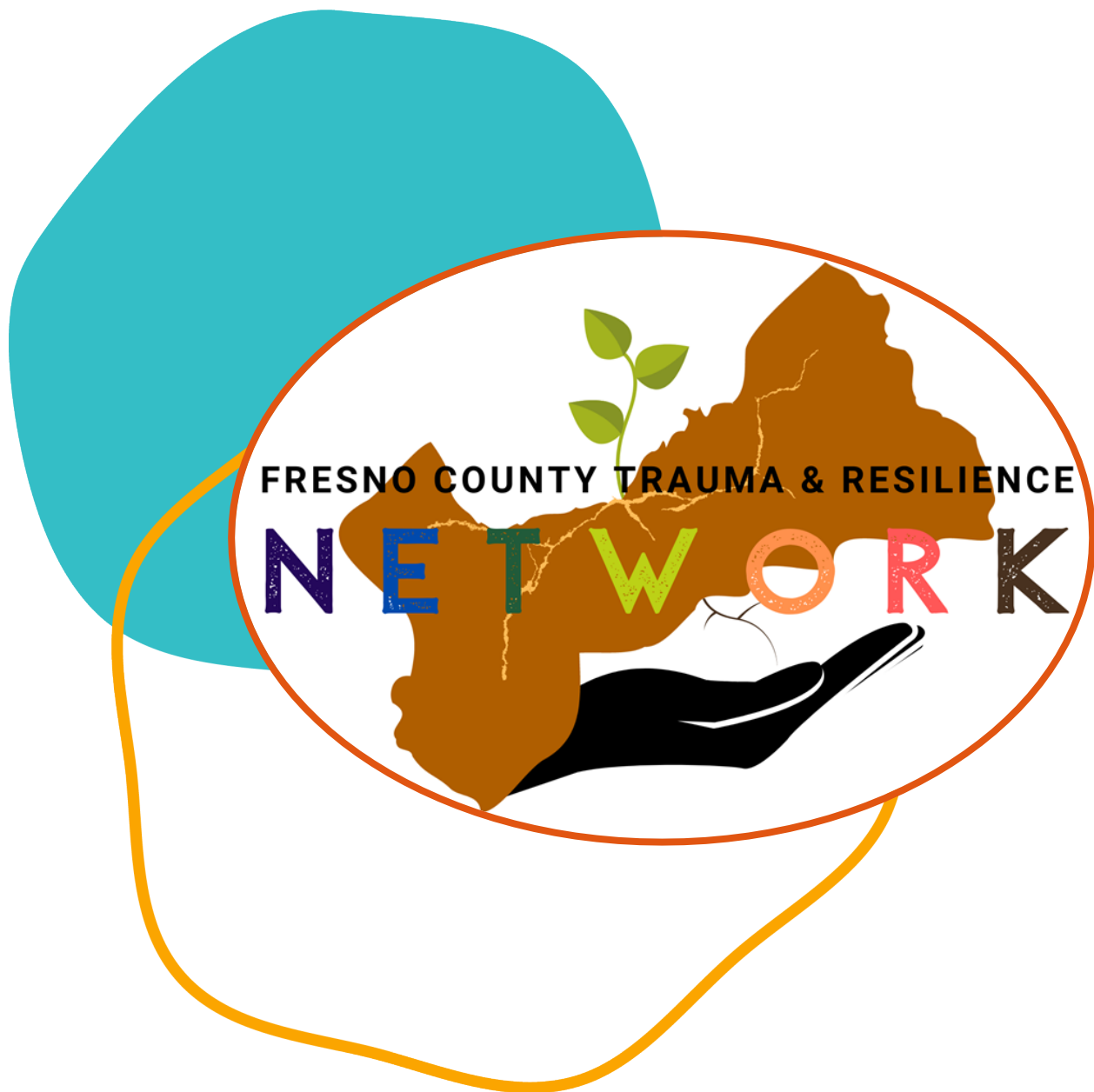
- Diverse population of 1 million people
- 5th largest city in California
- 2nd highest concentration of poverty in the U.S.
- 3rd largest school district in California



Network of Network

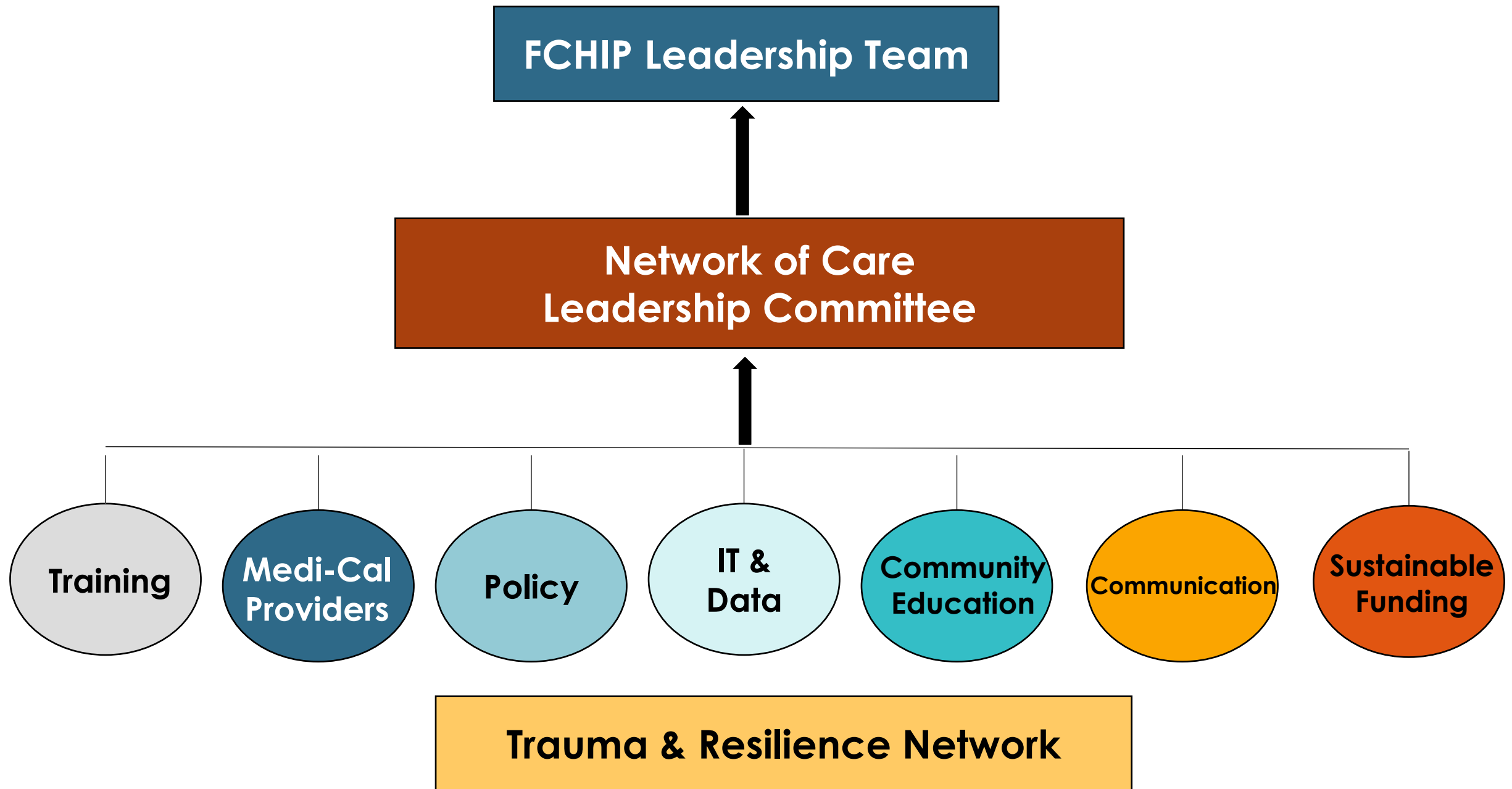


- Anchored in Racial Equity
- Trauma-Informed
- Focused on Transformative Community Engagement



Includes:

- 65 Community-Based Organizations
- 4 of the Largest Hospitals in the Region
- 7 School Districts
- City and County Departments
- Works under the FCHIP initiative



Saint Agnes Medical Center



- Not-for-profit hospital; 436 acute care beds
- Located in Fresno County serving a 4-county region (Fresno, Madera, Tulare, Kings)
- Member of the nation's largest Catholic Health system (Trinity Health)
- Graduate Medical Education and Physician Residency programs
- Active members of numerous local coalitions and workgroups



Case Study #1

Case Study #1 Background

Pre-launch

- 68-year-old woman experiencing multiple ED visits related to mental illness issues
- Patient referred to CHW for resource assistance

Case Study #1

Assessment for Social Care Needs

- Using a care coordination pathway, the CHW:
 - Assessed current health needs
 - Provided medication reconciliation
 - Assessed for health care, social services, and buffering resources such as: **food security**, **mental health**, and **support network**
 - Created a plan for post-visit treatment
- These services directly impact the toxic stress buffering domains of: **balanced nutrition**, **mental health care**, and **supportive relationships**



Case Study #1

Health

- Patient connected with a primary care provider who referred patient:
 - Behavioral health
 - Cardiologist
 - Neurologist
- Patient connected to dentist, vision care
- Medications were regulated and pharmacy connection made
- Transportation resource connection made through Medi-Cal

Social

- Patient connected to food resource and food stamps
- Social Security funds restored
- Patient's dog was certified as comfort companion
- Helped to stabilize patient housing in a permanent senior apartment with her pet

Case Study #1

Post-launch

- ACE Score assessed: 9
- Patient is now developing healthy relationships with her neighbors, is active with her pet, and will reconnect with family in March
- Patient has not been in the Emergency Room for more than one year

UCSF Fresno



- Branch of UCSF School of Medicine
- Largest academic physician-training program between Sacramento and Los Angeles
- Partnerships:
 - Community Regional Medical Center: The only Level 1 Trauma Center between Sacramento and Los Angeles
 - Fresno VA
 - University Centers for Excellence
 - Family Health Care Network

UCSF Fresno + Trauma and Resilience Network

- ❑ Goal 1: Provide link between providers and community resources.
- ❑ Goal 2: Train providers on how to access community resources.
- ❑ Goal 3: Collaborate with CBOs in order to train practicing physicians and resident physicians in the clinical response to ACEs.



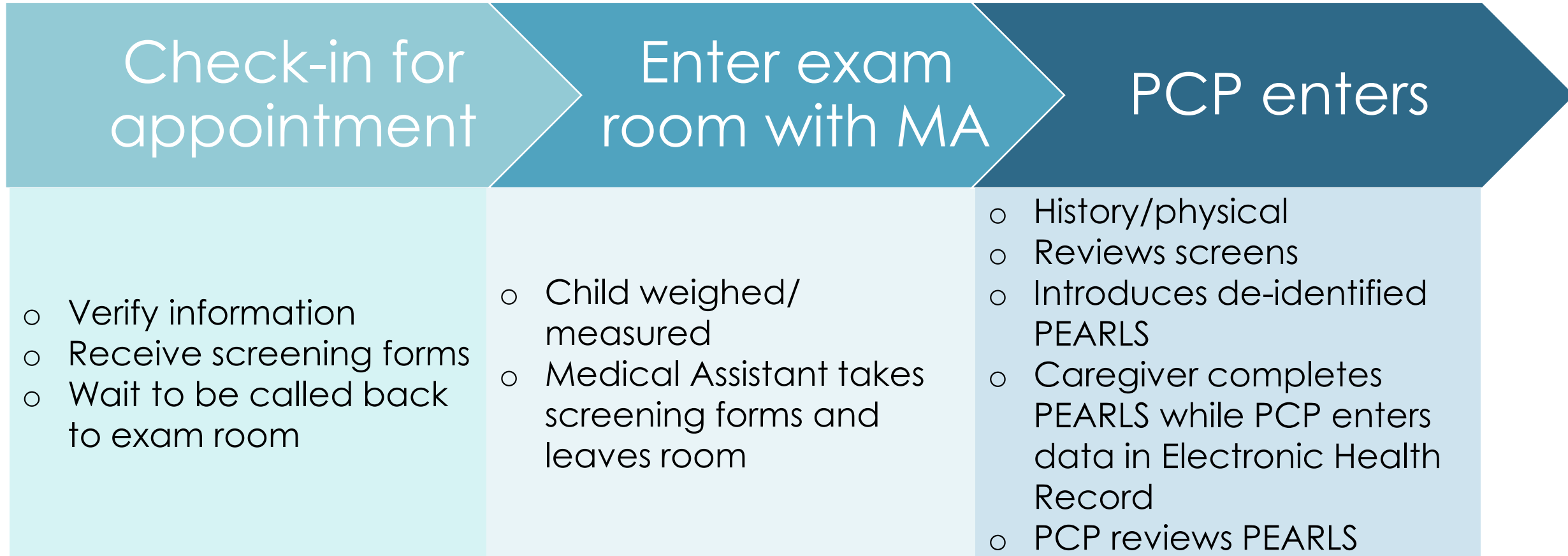


Case Study #2

Case Study #2 – Background

- 3-year-old female
- ACE score: High Risk (score of 4+ with associated health conditions)
- Lives with mom and two siblings under 2
- Diagnosed with asthma at 18 months
- Missed her last few appointments with pulmonologist for asthma follow up and has difficulty getting to the pharmacy to pick up prescriptions
- At pediatrician for her 3-year Well Child Check

Case Study #2



Case Study #2

Clinical Response

- PCP discusses resilience and buffering resources
 - Provide family with hard copy of “Stress Busters” circle chart
 - Discuss potential referrals
 - Give agency info for family to self refer or make an electronic referral
 - Schedule follow-up
-
- Have Healthy Steps Specialist come into exam room and meet with family for further assessment
 - Discuss further handouts and referrals;
 - help family contact agencies; schedule follow up

Follow Up Appointment

- PCP schedules a follow up appointment to ensure linkage 1-2 months (video)
-
- **Healthy Steps Specialist will follow up with family* and provide disposition to PCP*



**Medi-Cal
Providers**

**Network
of Care**

*Drawing by Ava,
2nd Grade*



**Medi-Cal
Providers**

**Trust
Communication
Compatible Technology
Sustainable Funding**

**Network
of Care**

*Drawing by Ava,
2nd Grade*



**Medi-Cal
Providers**

**Trust
Communication
Compatible Technology
Sustainable Funding**

**Network
of Care**

*Drawing by Ava,
2nd Grade*



Future Focused...

Ava, 2nd grade @ Sequoia National Park



Audience Questions & Answers

ACEs Aware Provider Training



- 1. Get trained** at www.ACEsAware.org/training
 - Free, 2-hour online course that offers CME and MOC credits
- 2. Self-attest to completing the training** at www.Medi-Cal.ca.gov/TSTA/TSTAattest.aspx
 - List of Medi-Cal provider types eligible to receive payment at www.ACEsAware.org/eligible-providers/
- 3. Be part of the ACEs Aware Provider Directory** at www.acesaware.org/provider-directory



Resources By Top

The ACE resources below are organized to help you find a resource more quickly. Select a top category to view corresponding resources.

COVID-19 & Stress

Educational Events

Provider Toolkit

ACEs Aware Grants

ACE Resources

right

Visit [Advanced Search](#) to filter the resources and search by keyword.

Resources by Type

Clinical Resources for Adult Providers

Clinical Resources for Pediatric Providers

Organizational Toolkits

Patient/Family Education Handouts

Policy, Research and Advocacy Briefs

Resources by Topic

Resilience-Building Interventions

Science of Toxic Stress

Screening & Clinical Response

Self-Care Tools

Trauma-Informed Systems

Upcoming Webinars

Register for Webinars and Find Webinar Recordings at:

www.ACEsAware.org/educational-events



Questions?

Contact Us



Info@ACEsAware.org

