



The Trauma-Informed Network of Care Roadmap

A Guide for Strengthening Community Partnerships

June 28, 2021

ACEs Aware Mission



To change and save lives by helping providers understand the importance of screening for Adverse Childhood Experiences and training providers to respond with trauma-informed care to mitigate the health impacts of toxic stress.

ACEs Aware Goals & Objectives



Raise Awareness

Train and expand awareness among Medi-Cal providers on ACE screening, response, and trauma informed care



Practice Change

Support implementation of ACE screening, response, and trauma informed care for Medi-Cal providers



Network of Care

Support development of a functional trauma-informed network of care

Reduce ACEs and toxic stress by half in one generation

Presenters

Frank Mecca

Former Executive Director, County Welfare Directors Association of California (retired)

Jennifer Ryan

Executive Vice President, Aurrera Health Group

Carol Backstrom

Vice President, Medicaid Policy & Programs, Aurrera Health Group



Agenda

- History and Purpose of Trauma-Informed Network of Care Roadmap
- Building and Supporting Robust Networks of Care
- Action steps for clinics, practices, and community-based organizations to grow cross-sector networks of care
- Questions & Discussion

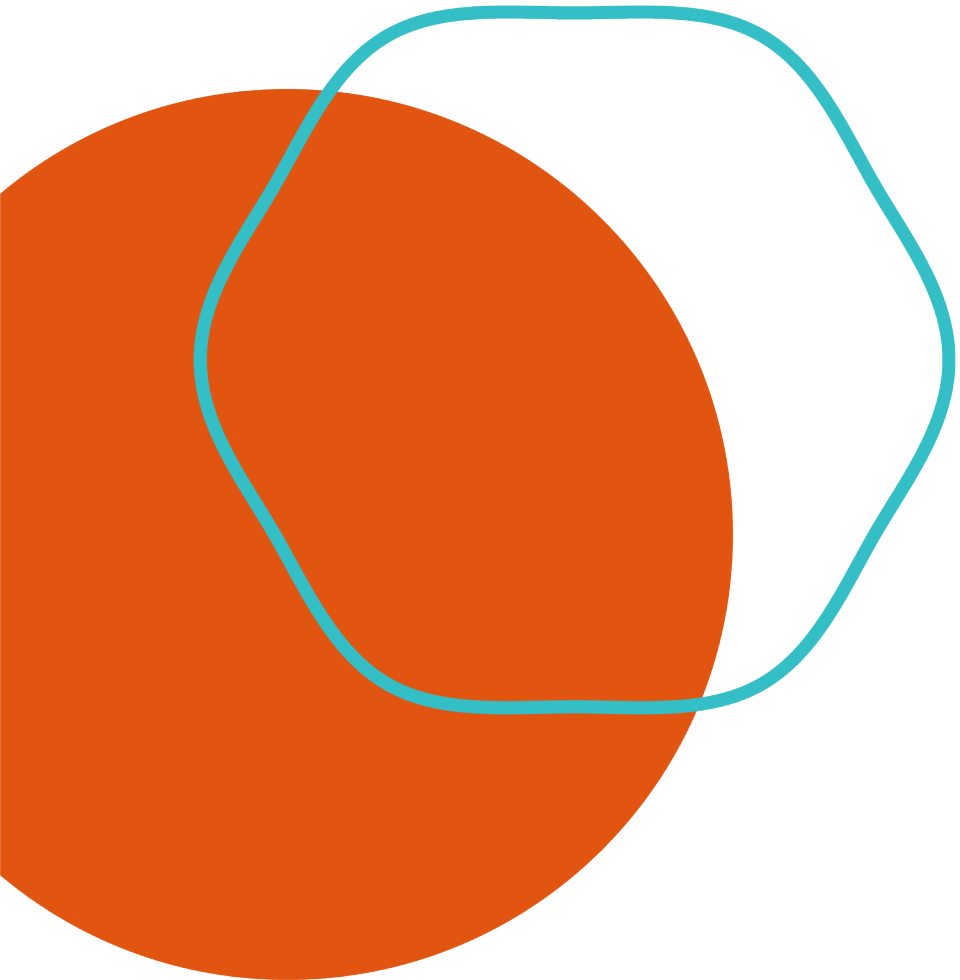
History and Purpose

- Address widespread concern about how to screen for ACEs effectively if resources are not in place to help with referral and response
- Integrating health care clinics and practices with community-based organizations and social service agencies
- Building shared accountability for the well-being of patients and families

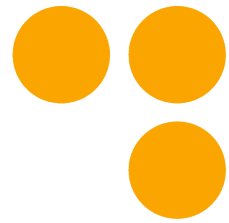


History and Purpose

- Established ACEs Aware Network of Care Subcommittee
- Studied and discussed existing models with similar purposes:
 - Project ECHO
 - Ryan White program
 - Hub-and-Spoke models for MAT
 - Accountable Health Communities in other states
- Planning for ACEs Aware grants to fund planning and implementation of Trauma-Informed Networks of Care



Network of Care Subcommittee Co-Chair



Frank Mecca

Network of Care Subcommittee

Member	Organization/Entity
Mary Ann Hansen (Co-Chair)	First 5 Association of California, First 5 Humboldt
Frank Mecca (Co-Chair)	Retired, formerly with County Welfare Directors Association of California
Gatayna Arnic	Center for Youth Wellness
Yvonne Choong	California Medical Association
Jonathan Goldfinger, MD	Didi Hirsch Mental Health Services
Michael Brodsky, MD	L.A. Care Health Plan
Edward Machtinger, MD	University of California, San Francisco

Network of Care Roadmap Development

The Network of Care Roadmap has been informed by the following:

- Monthly guest speakers and key informant interviews about lived experience in building, executing, and sustaining Networks of Care in communities;
- Discussions about Network of Care elements, partners, and services;
- California Surgeon General's Clinical Implementation Subcommittee and Provider Engagement & Education Subcommittee;
- Key advisors; and...

YOU!

- Roadmap public comment period from December 15, 2020 – January 15, 2021
- Final Released on June 23rd

Trauma-Informed Network of Care Roadmap

aces aware
SCREEN. TREAT. HEAL.



ACEs Aware
Trauma-Informed Network of Care
Roadmap

Trauma-Informed Network of Care Definition

- A group of interdisciplinary health, education, and human service professionals, community members, and organizations;
- Supports families by providing access to evidence-based “buffering” resources and supports; and
- Helps to prevent, treat, and heal the harmful consequences of toxic stress.

**Evidence-based
“buffering”
supports can
regulate the
toxic stress
response in real
time.**



Who is in the Network of Care?

Provider Type	Examples
Primary Care Providers	Pediatricians, Family Medicine, Nurse Practitioners, SBHCs
Behavioral Health Providers	Psychologists, County Mental Health, Social Workers, FQHCs
Schools/Education	Offices of Education, Superintendents, Family Resource Centers, SBHCs, School lunch program
Early Intervention Services	Help Me Grow, Child Advocacy Centers
Social Service Programs	FRCs, CalFresh, WIC, Home Visiting
Local and County Government Programs	First 5, Black Infant Health, Child Abuse Prevention, Parks & Recreation, Adult Protective Services
Community Based Organizations	National Alliance on Mental Illness (NAMI), Culturally Specific Providers (e.g., Promotoras, LGBTQ community centers, translation services),
Tribal Organizations	Urban-Indian Health Agencies, Indian Child Welfare Act, Family Violence Prevention, Tribal Justice
Legal/Justice System	Juvenile Justice, Family Courts, Mediation/Divorce Teams, Domestic Violence Support, Family Reunification, Tribal-State-Court Forum, Medical-Legal Partnerships
Digital Health Technology Platforms	Unite Us, Aunt Bertha, FINDConnect), Service Care Coordination (e.g. Mahmee, Emilio Health), Mindfulness services, (e.g. Headspace)
Provider Networks/Managed Care Plans	IPAs, MCPs, DMC-ODS, County MH

Trauma-Informed Network of Care Roadmap

- Background on ACEs & Toxic Stress
 - Why screen for ACEs
 - What is a Trauma-Informed Network of Care?
 - Who should be involved in the Network of Care?
- ACE Screening Clinical Workflow & Tools
 - The Biological Stress Response
 - Toxic Stress Risk Assessment Algorithms for Children and Adults

Network of Care “Milestones” for Providers and Communities

- Build and commit to **cross-sector partnerships** and establish a formal leadership and accountability structure;
- Understand and **document all available resources** such as health care, community-based, and social services;
- Establish **referral and response workflows** across sectors; hold each other accountable for follow-up;
- Leverage **technology** to facilitate connections; and
- **Evaluate, refine, and improve** Network of Care activities.

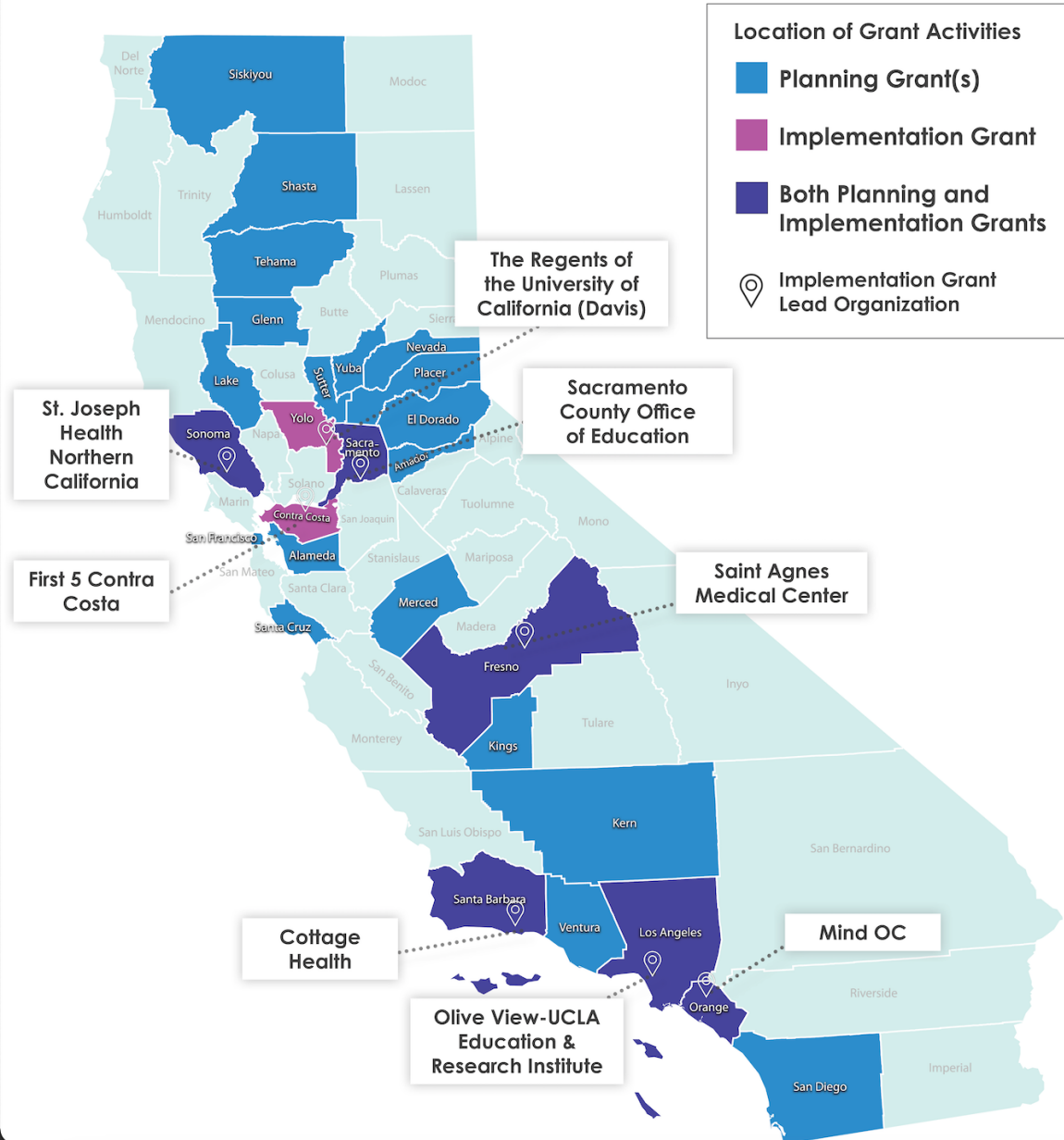


See the full [Network of Care Roadmap](#) for more information.



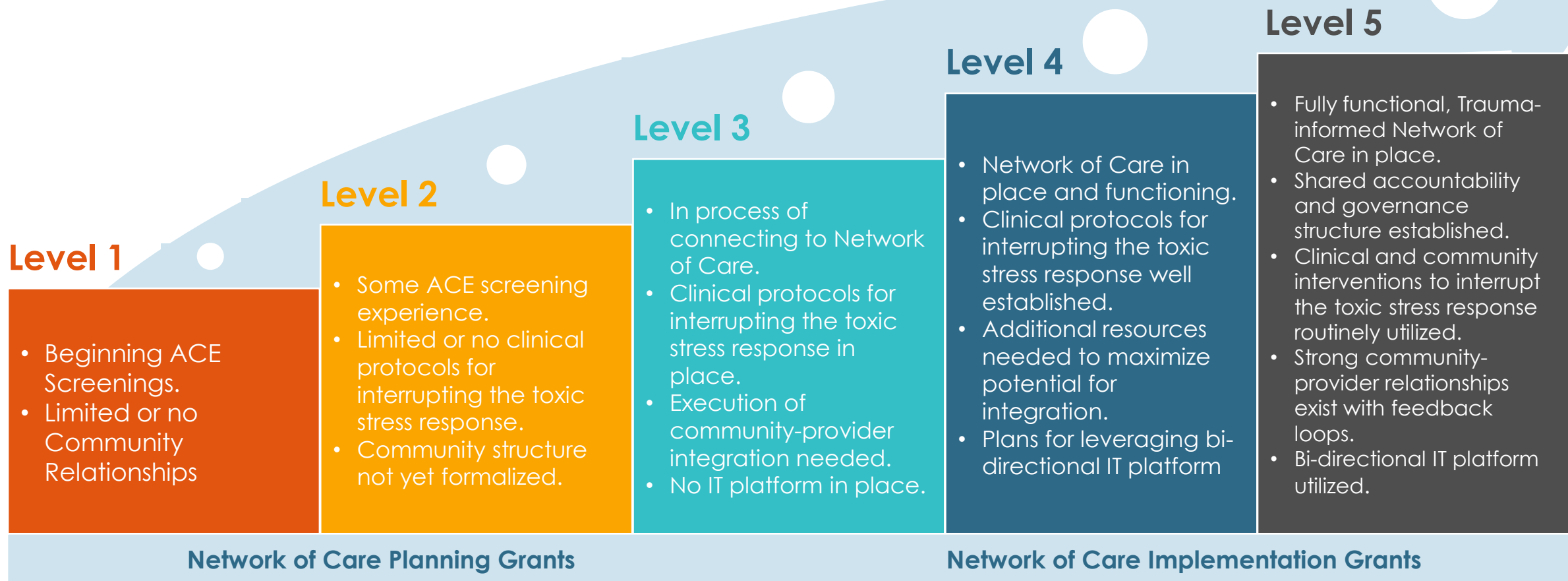
**How is the
Roadmap
being brought
to life?**

Trauma-Informed Network of Care Grants



- **\$30.8 million in ACEs Aware grant funding awarded to 35 communities across the state**
- **27 Network of Care Planning Grants**
 - 9-months, \$300,000
- **8 Network of Care Implementation Grants**
 - 18 months, \$3 million
 - For communities that demonstrate a significant level of collaboration and coordination across Medi-Cal providers and sectors.
 - Grant funds must be distributed across partners

Network of Care Continuum of Integration



Milestones for Clinical Teams: Grantee Examples

Milestone #1: Conduct a Readiness Assessment

- Many Grantees have required the use of the Network of Care readiness assessment for all clinical partners

Milestone #2: Define Clinical Roles and Tasks

- The County of Glenn, a Network of Care Planning Grantee, is piloting the use of CHWs as referral coordinators in two clinics

Milestone #3: Gather Resources and Get to Know Your Network of Care

- AltaMed plans to create a workflow that includes information about referring patients to internal departments at AltaMed and external resources with partnering organizations

Milestone #4: Consider Financing and Technology Needs

Milestone #5: Monitor, Evaluate, & Improve Referral Process

- Several Grantees, while not conducting PDSA processes yet, have established committees

Milestones for Communities: Grantee Examples

Milestone #1: Identify or Establish a Strong Leadership and Accountability Structure

- Mind OC, a Network of Care Implementation Grantee, has defined accountability through sub-grantee agreements with each funded partner delineating roles, responsibilities, and expectations

Milestone #2: Connect with Clinical Care Teams, Community, and Other Resources

- St. Agnes, a Network of Care Implementation Grantee, has begun working with a LGBTQ resource center based on conducting a gap assessment as recommended in Milestone #2

Milestone #3: Achieve Community and Health Care Integration

Milestone #4: Consider Financing and Technology Needs

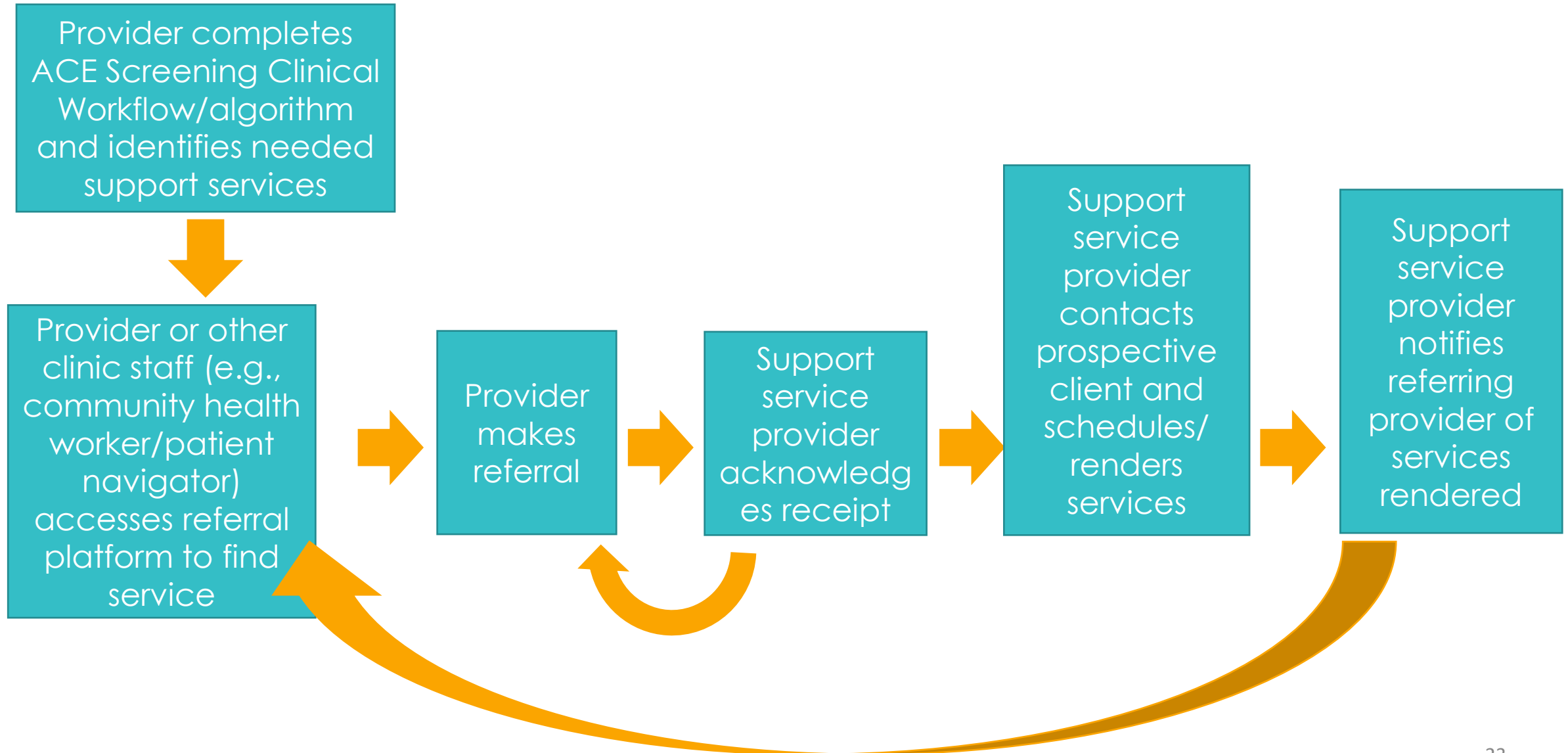
- First 5 Contra Costa, a Network of Care Implementation Grantee, is mapping resources in their referral database to the 8 stressbusters

Milestone #5: Evaluate and Improve the Strength of the Trauma-Informed Network of Care

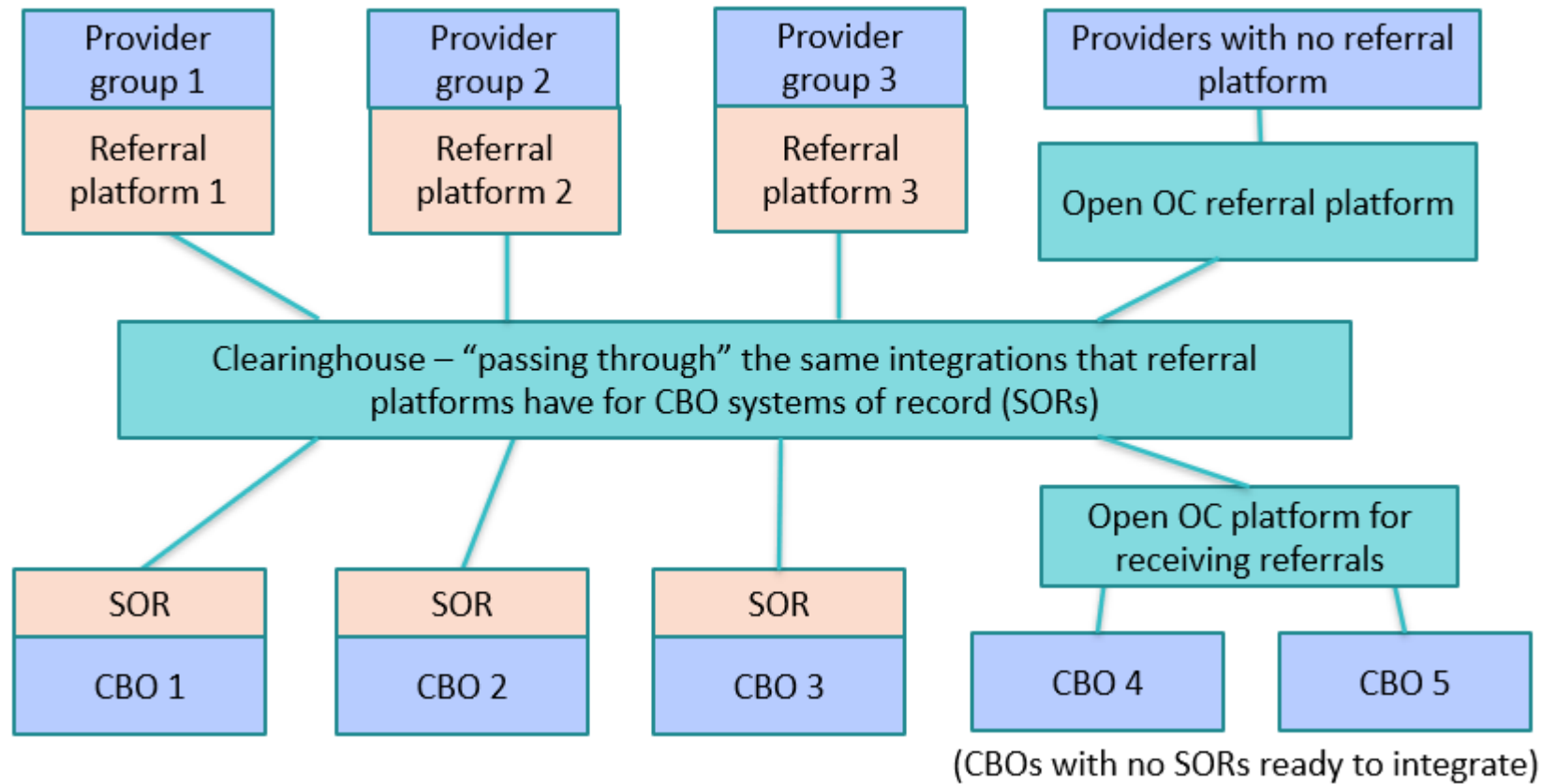
Leveraging Digital Resource Platforms

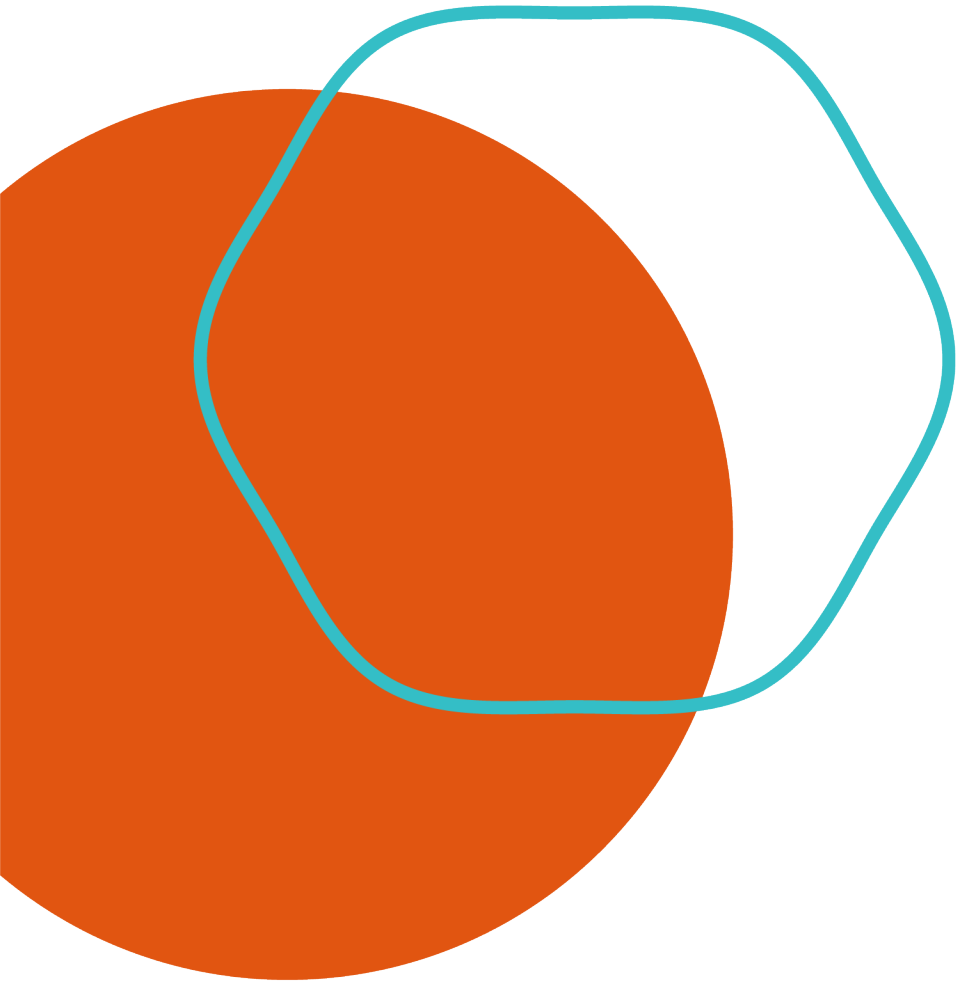
- Engage stakeholders
- Determine functionality priorities
- Establish data governance model and infrastructure
- Select buy, build, integrate, hybrid
- Conduct continuous evaluation and quality improvement

Model Closed-Loop Referrals for Networks of Care

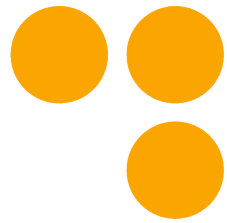


Leveraging Existing Platforms Approach (Mind OC)





**What can we do
next?**



Take the ACEs Aware Training & Get Certified



- 1. Get trained** at www.ACEsAware.org/training
 - Free, 2-hour online course that offers CME and MOC credits
- 2. Self-attest to completing the training** at www.Medi-Cal.ca.gov/TSTA/TSTAattest.aspx
 - List of Medi-Cal provider types eligible to receive payment at www.ACEsAware.org/eligible-providers/
- 3. Be part of the ACEs Aware Clinician Directory** at www.acesaware.org/provider-directory



Resources

Information and resources for clinicians on ACE screening and clinical response

Resources by Type

Resources by Topic

Resources By Stage

Advanced Search

Frequently Asked Operational Questions

While approaches for responding to ACEs, ACE-associated health conditions, and toxic stress may differ by practice setting or community, ACEs Aware is aggregating and sharing learnings, research, practices, and experiences that will unite us to advance the standard of care for ACEs and toxic stress.

Visit [Advanced Search](#) to filter the resources and search by keyword.

For information and resources on managing stress related to COVID-19, [visit our COVID-19 & Stress page](#).

Resources by Type

Clinical Resources for Adult Providers

Clinical Resources for Pediatric Providers

Patient/Family Education Handouts

Organizational Toolkits

Policy, Research and Advocacy Briefs

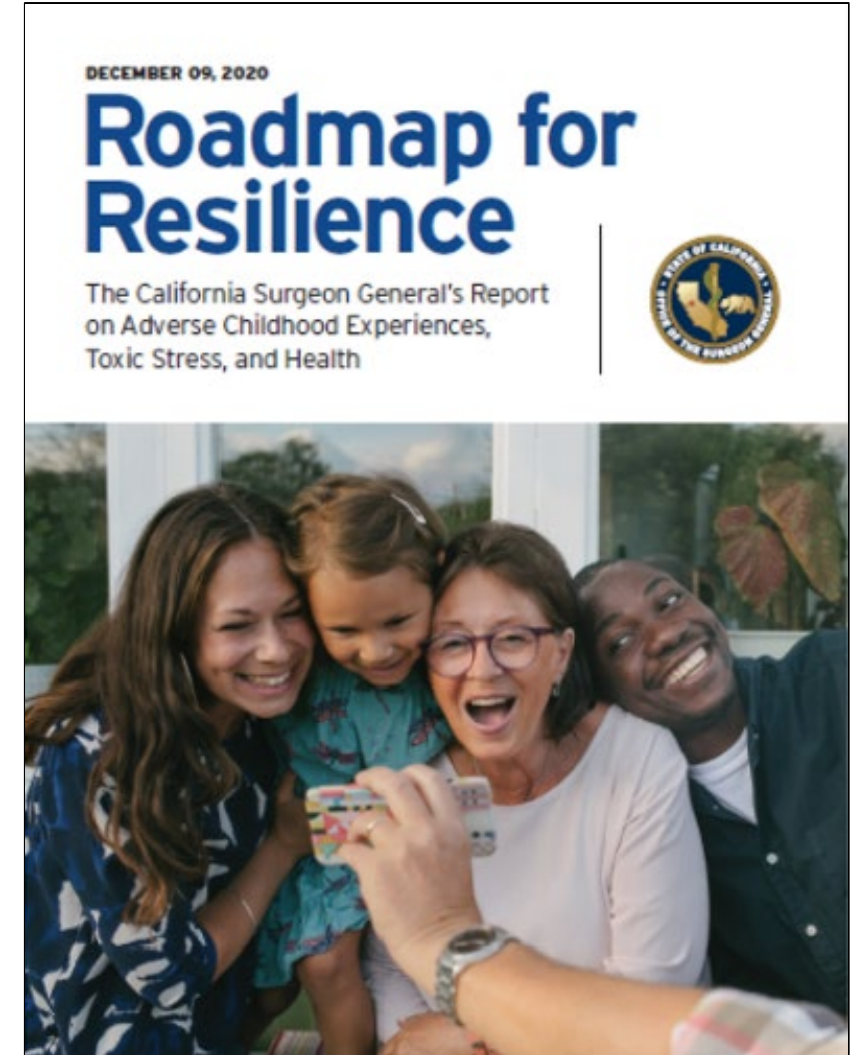
Check out the California Surgeon General's Report

Materials available at

<https://osg.ca.gov/sg-report/>

- Full 438-page report
- Executive Summary
- 12 briefs summarizing key themes
- Social Media Toolkit
- Public webinar

aces aware 
SCREEN. TREAT. HEAL.



Join ACEs Aware Webinars

Register for Webinars and Find Webinar Recordings at:

www.ACEsAware.org/educational-events

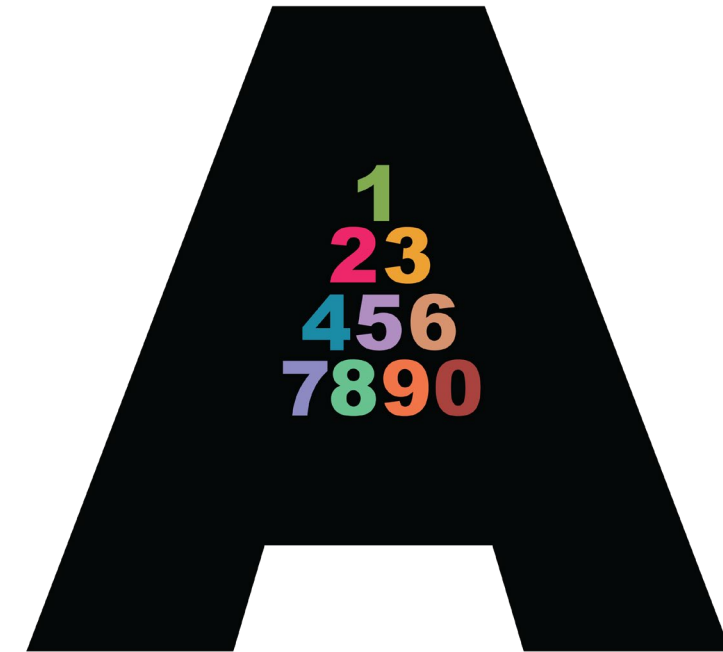
Join the Movement!



**LET'S MAKE OUR STATE
OF CARE ACES AWARE.**

Learn more at
ACESAware.org

aces aware
SCREEN. TREAT. HEAL.



NumberStory.org

aces aware
SCREEN. TREAT. HEAL.



Questions & Discussion

Contact Us



Info@ACEsAware.org

