



Grantee Spotlight



December 14, 2021



Agenda

○ **Spotlight Grantees**

- First 5 Tehama
- WIN (Westside Infant-Family Network)
- Cottage Health

○ **Group Discussion**



Welcome



Nadine Burke Harris, MD, MPH

California Surgeon General

Office of the California Surgeon General



First 5 Tehama

Tehama ACEs Aware

First 5 Tehama

Empower Tehama

Expect More Tehama

Northern California Child
Development Inc.

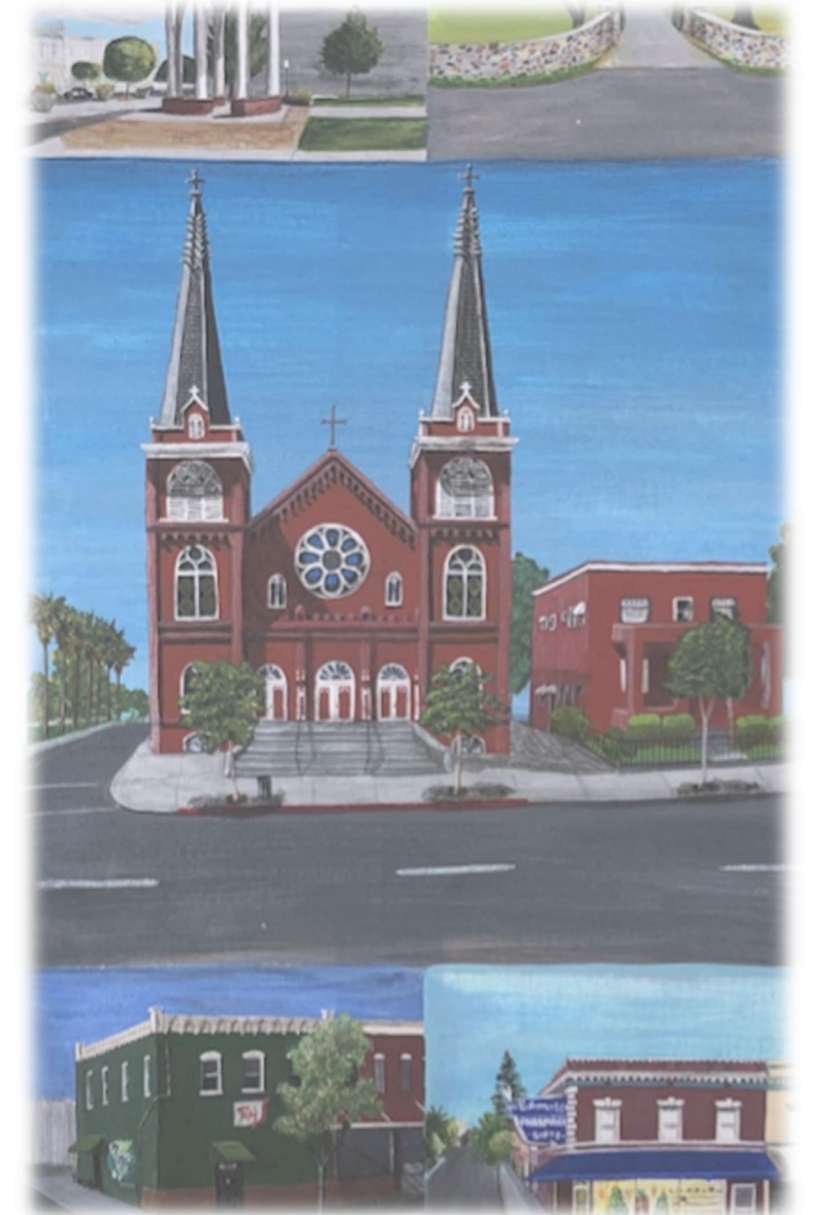
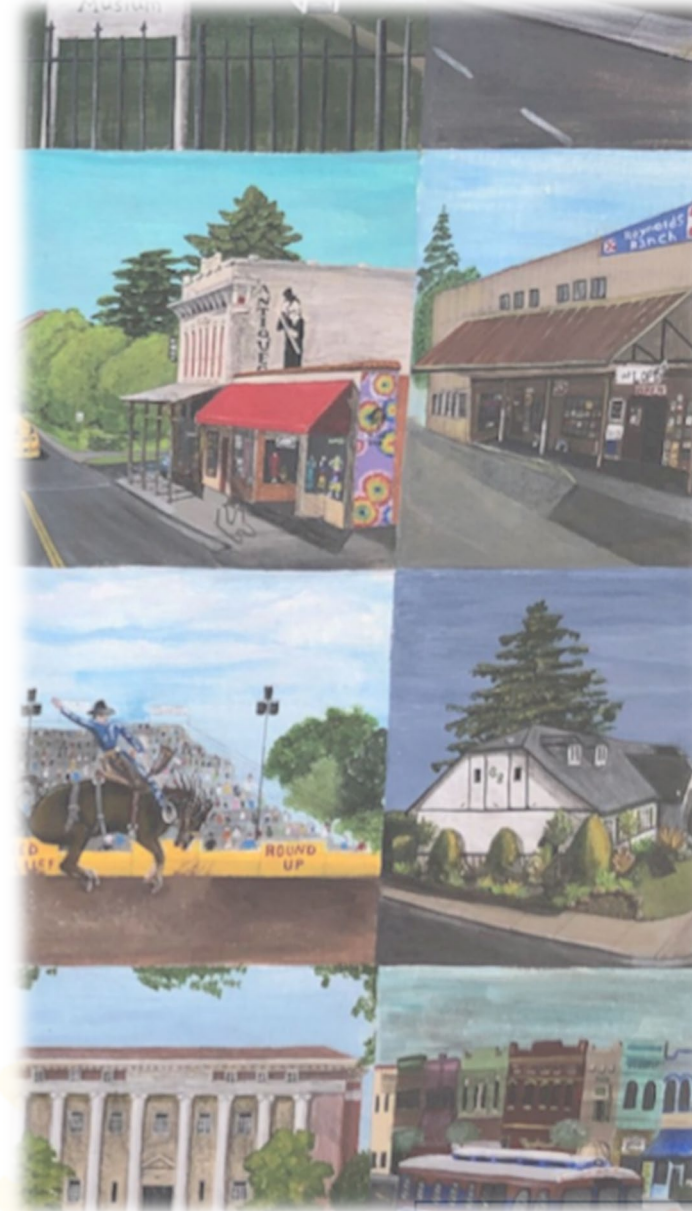
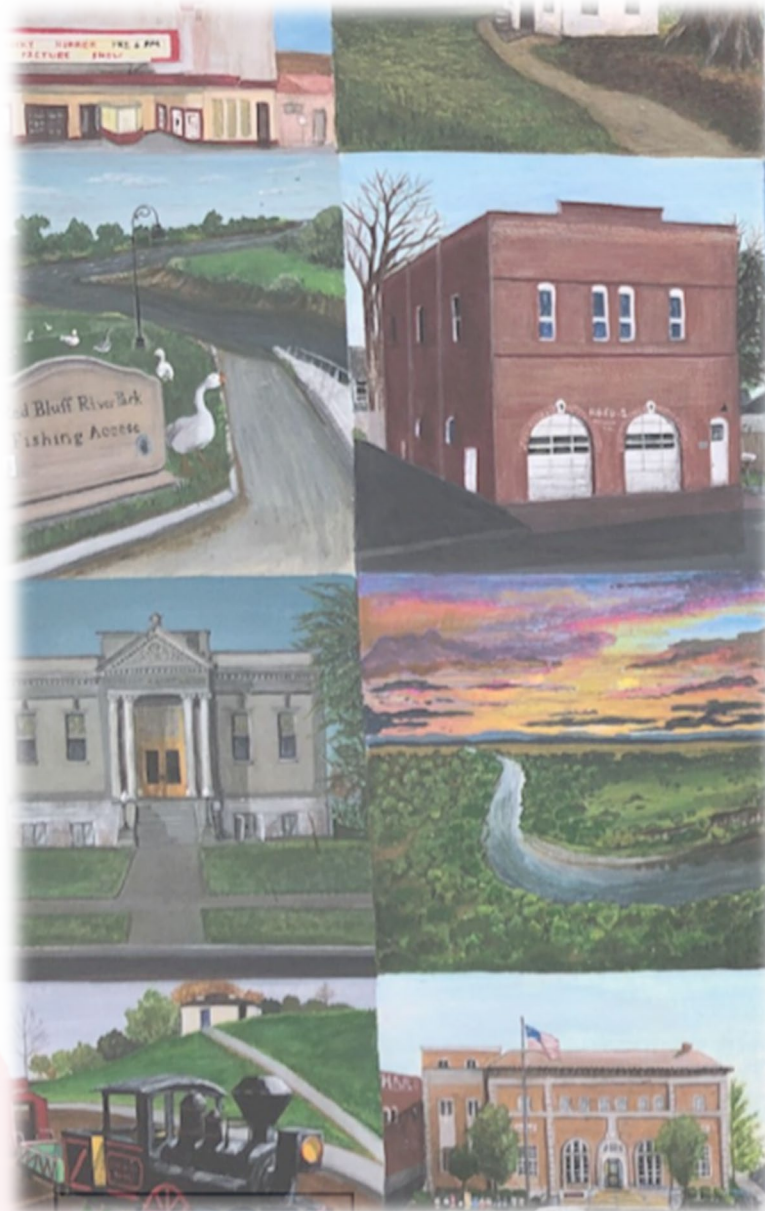
Tehama County Department of
Education

Tehama County Department of
Social Services

Tehama County Health Service
Agency

Dignity Health

2-1-1 NorCal United Way



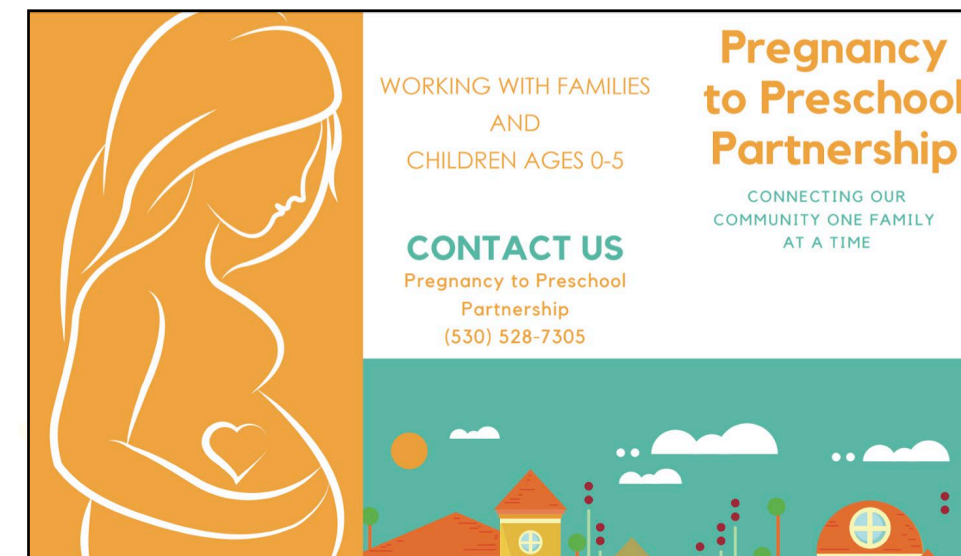
Building on a Strong Foundation

The **Early Intervention Partnership** is a First 5 Tehama committee comprised of administrators with a mission of ensuring a coordinated system of prevention and early intervention services and support for young children ages 0-8 and their families.

Help Me Grow Tehama:



Pregnancy to Preschool Partnership:



Tehama ACEs Aware Network of Care (*Rural Style*)

Home Visitors, TCDE, NCCDI, TCHSA

First 5 Tehama
Help Me Grow Tehama, F5
and TCDE

Expect More Tehama
*Job Training Center
*AmeriCorps

Child Protective Services, TCSS
Child Abuse Prevention
Council, NCCDI



State Preschool, TCDE
Head Start, NCCDI
Special Education, TCDE

Home Visitors, TCDE, NCCDI, TCHSA
Community Action Agency, TCSS

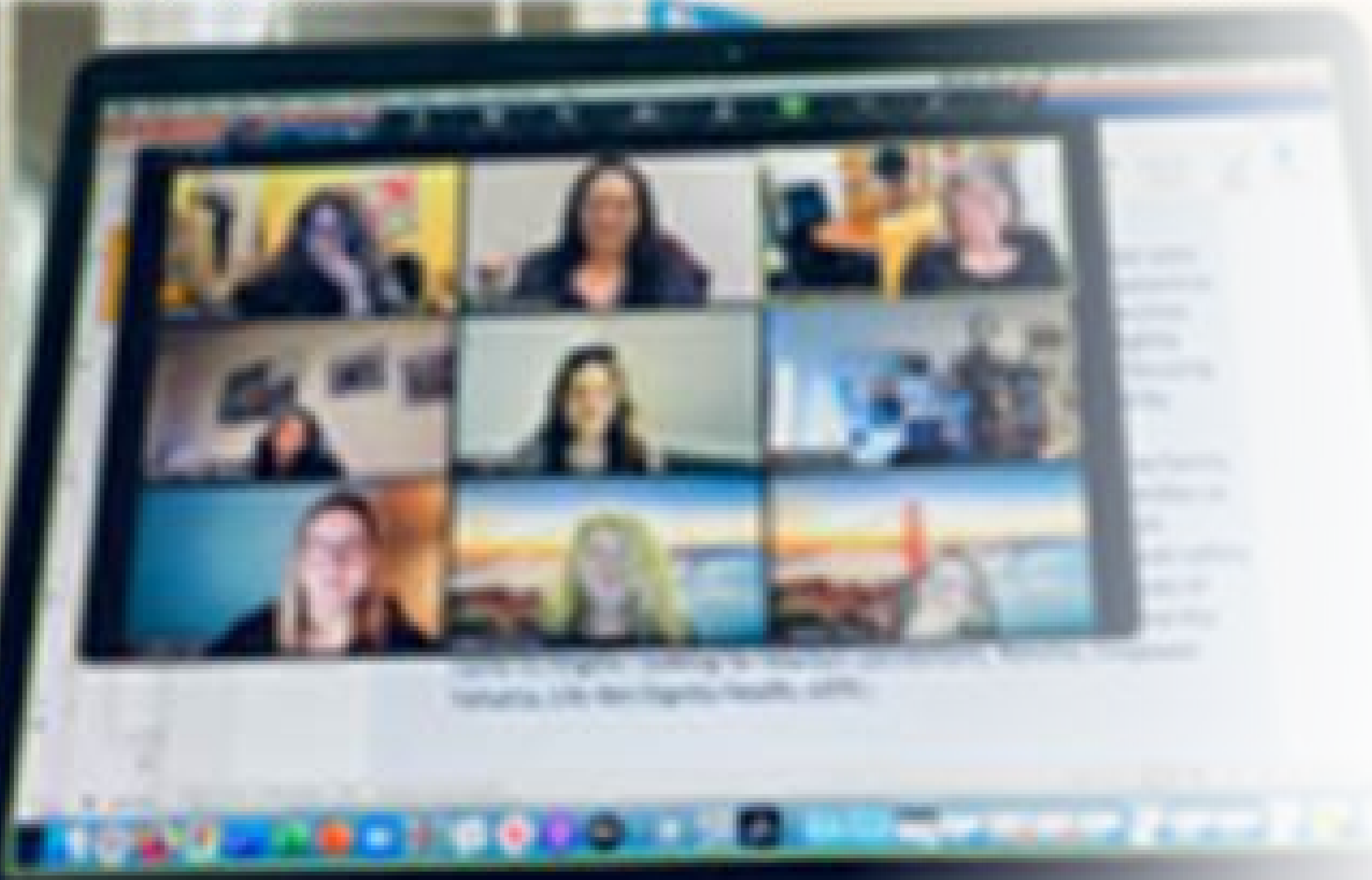
Home Visitors, TCDE, NCCDI, TCHSA
Community Action Agency, TCSS
Housing, NCCDI, TCHSA, TCSS

Dignity Health
Tehama County Health Clinic, TCHSA
Tehama County Public Health Mobile Clinic
TCHSA
*Home Visitors, TCDE, NCCDI, TCHSA

Empower Tehama
Tehama County Behavior Health, TCHSA
Tehama County Mental Health, TCSHA
Head Start Community Counseling,
NCCDI



Tehama County Children & Families Commission




- **Convening Themes**
 - Education for providers, all staff, community members
 - Communication across County Systems
 - Referral systems
- **Convening Questions**
 - Are there enough resources?
 - Where are the gaps?

“Start where you are, use what you have, do what you can” ... Arthur Ashe

Power of Knowledge and Relationships

At least



58

providers/staff
ACEs Aware
trained



- Preschool using ACEs information layer additional stress buster resources
- 80 plus cradle to career community educators
- Medical Blue Anthem presented Cal Aim information at Pregnancy to Preschool Partnership

What's Next?

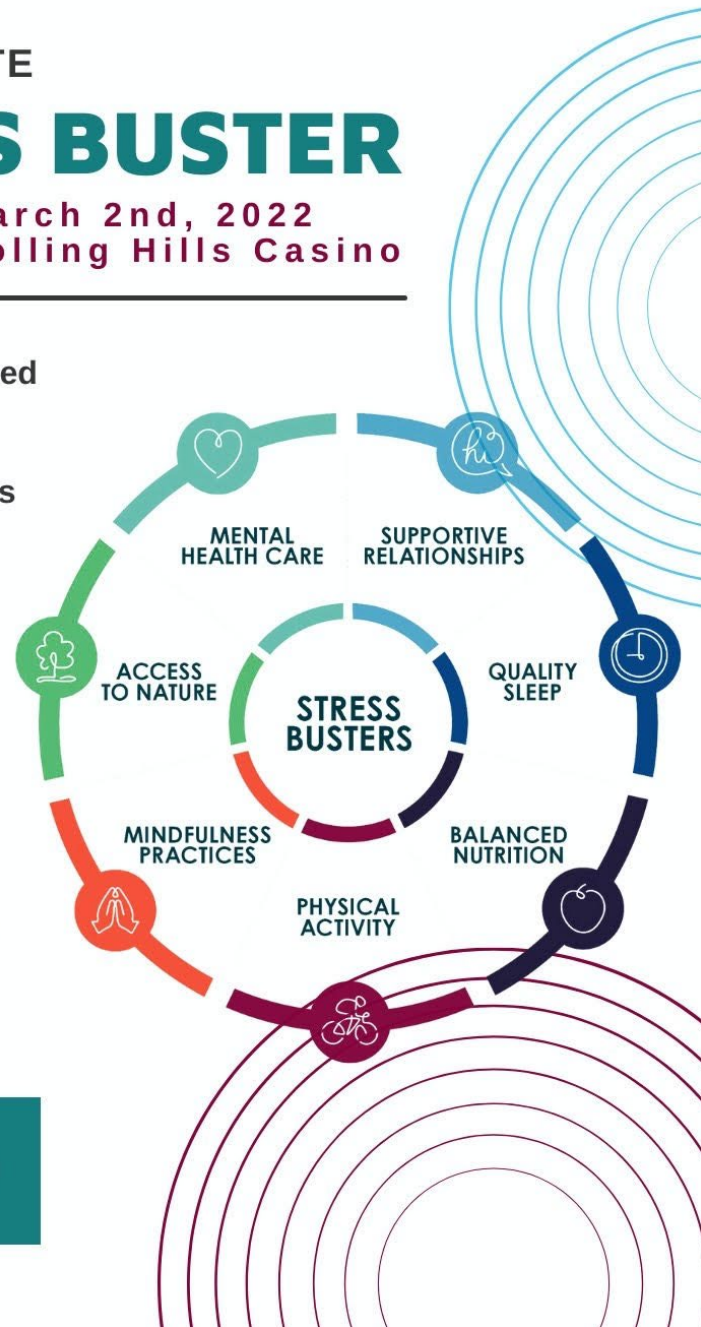
SAVE THE DATE

**STRESS BUSTER
CAFE** March 2nd, 2022
Rolling Hills Casino

Join other like minded professionals who provide support to children and families just like you.

COME TO LEARN AND SHARE ABOUT LOCAL PROGRAMS, LOCAL STRUGGLES AND LOCAL STRATEGIES FOR "STRESS BUSTING" AS WE SUPPORT CHILDREN AND FAMILIES AFFECTED BY ADVERSE CHILDHOOD EXPERIENCES

Leave with new tools and new or strengthened relationships.



1. Leveraging funding to increase stress buster resources while continuing to seek out new funding.
2. Building onto existing resources such as the closed loop referral system.
3. Increasing opportunities to build relationships across system, agency, and roles.



Questions & Discussion

Westside Infant-Family Network (WIN)



ACEs Aware Grantee Spotlight

December 14, 2021



Egypt Davis-Evans, Project Director, WIN

Our Mission

WIN empowers families with young children to build resilience and thrive by strengthening relationships within families and communities

Foundation for Our Network of Care

- WIN began ACEs work in 2015 with Venice Family Clinic
- WIN has been a convener and facilitator of strong community partnerships



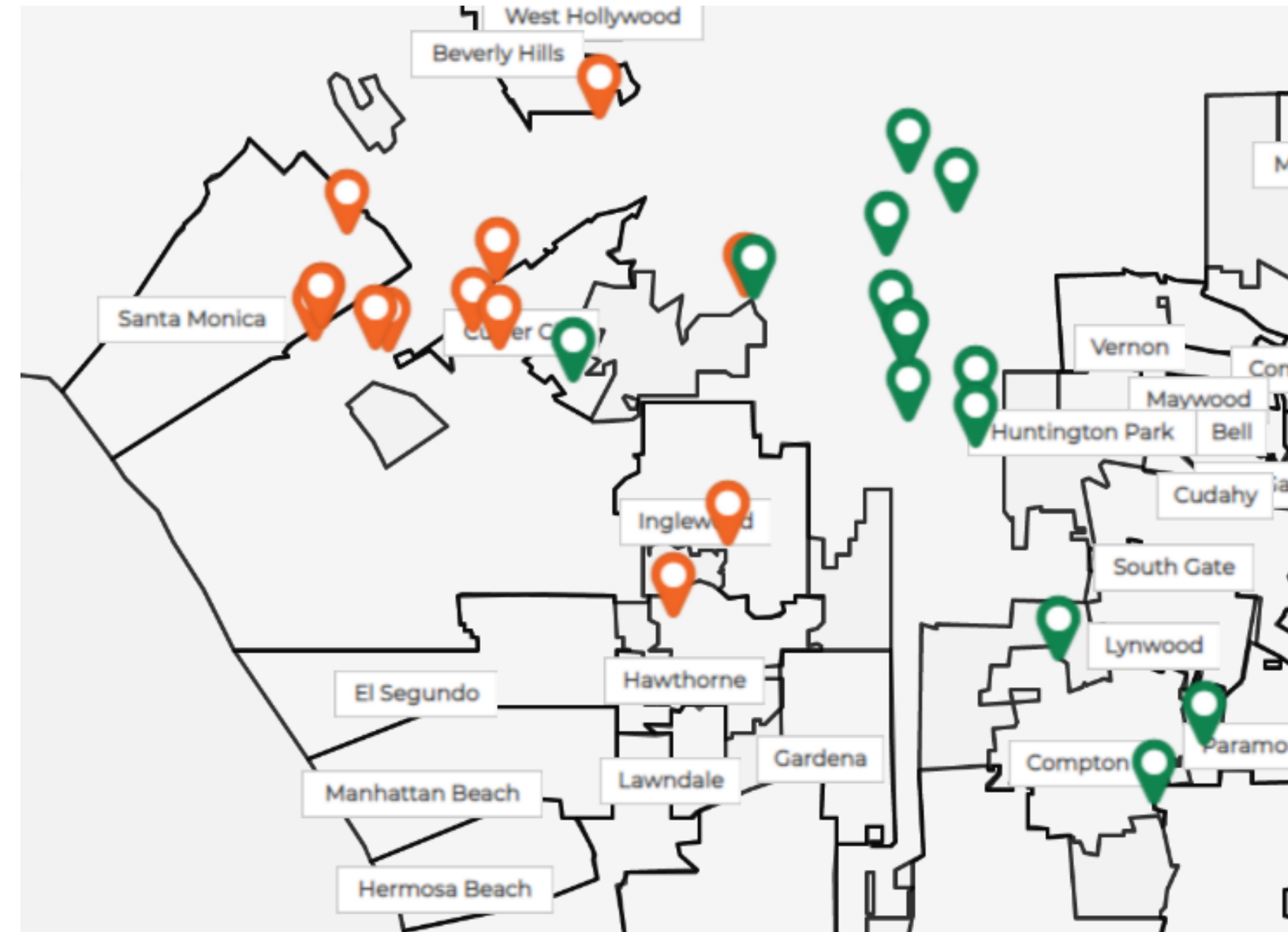
Building Our Network

“Health Neighborhoods” Foundation

- Three existing networks of community based orgs coordinating services
- Two long-term partner FQHCs

Expansion to South Los Angeles

- Clients across a broad geography
- No ACEs Aware grants in South LA
- Historically under-resourced area



- Original partner
- New partner

Diversity of Partners

Clinics

Patients Per Year

Community-Based Organizations

Partners in Network



27,000



17



27,552



9



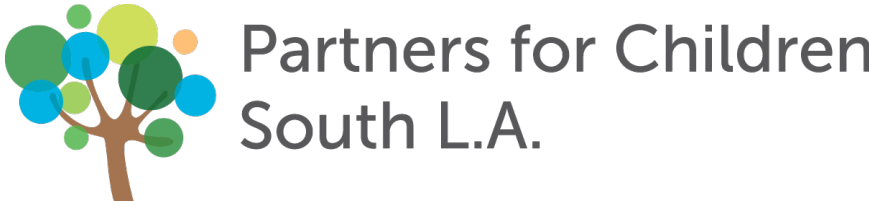
2,050



16



25,000



38



101,303

LA Resilience Network

Leadership Group

- Clinic and CBO partners in addition to MCO partners:



IT Platform and Data

- Reporting from Leadership Group and Resource and Referral Workgroup



Resource and Referral Workgroup

- Case Managers and Community Health Workers from each clinical partner
- Co-led by WIN CHW and lead from UMMA Community Clinic

Psychoeducation and Referrals

Psychoeducation and Referrals Pilot

- Began in August 2021
- Westside Family Health Center
- Embedded WIN Community Health Worker

Approach

- A series of psychoeducation sessions
- Connection to resources through Unite Us
- Data collection to identify areas of improvement and areas of success

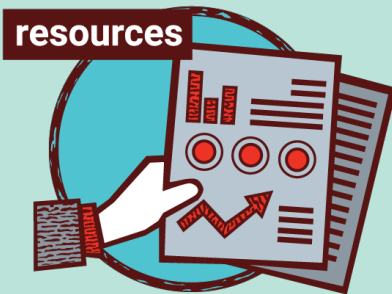


What's Next?



Refining Best Practices

- Screening workflows
- Resource and referral pathways



Building Out Buffering Support Resources and Connections

- Gaps in buffering supports
- Expansion of Unite Us adoption



Expansion of Mental Health Resources

- WIN becoming Medi-Cal provider
- Extreme need for additional mental health resources/
capacity to accept new referrals



Questions & Discussion

Cottage Health

Santa Barbara County Network of Care

Our mission is to establish support systems that nurture and protect children and families, with paths to resilience and a network of care to prevent, identify and address Adverse Childhood Experiences.



Pediatric Resiliency
COLLABORATIVE



WHAT WE'VE LEARNED

- The **importance** of intentional trust and relationship building
- The **value** of building on prior successes
- The **strength** of an integrated and aligned approach
- The **effort** and **flexibility** needed for equity and inclusion

FOCUS ON TRUST AND RELATIONSHIP BUILDING

**Change
moves at the
speed of trust.**

- STEPHEN COVEY

- **Honor, align** and **expand** upon existing community and provider networks
- **Partner** with our managed care entity
- **Develop** multi-sector Leadership Committee
- **Engage community** in the selection of IT Referral Platform
- **Connect new partners** to the Network of Care through Buffering Services Grants

BUILDING ON PREVIOUS SUCCESS

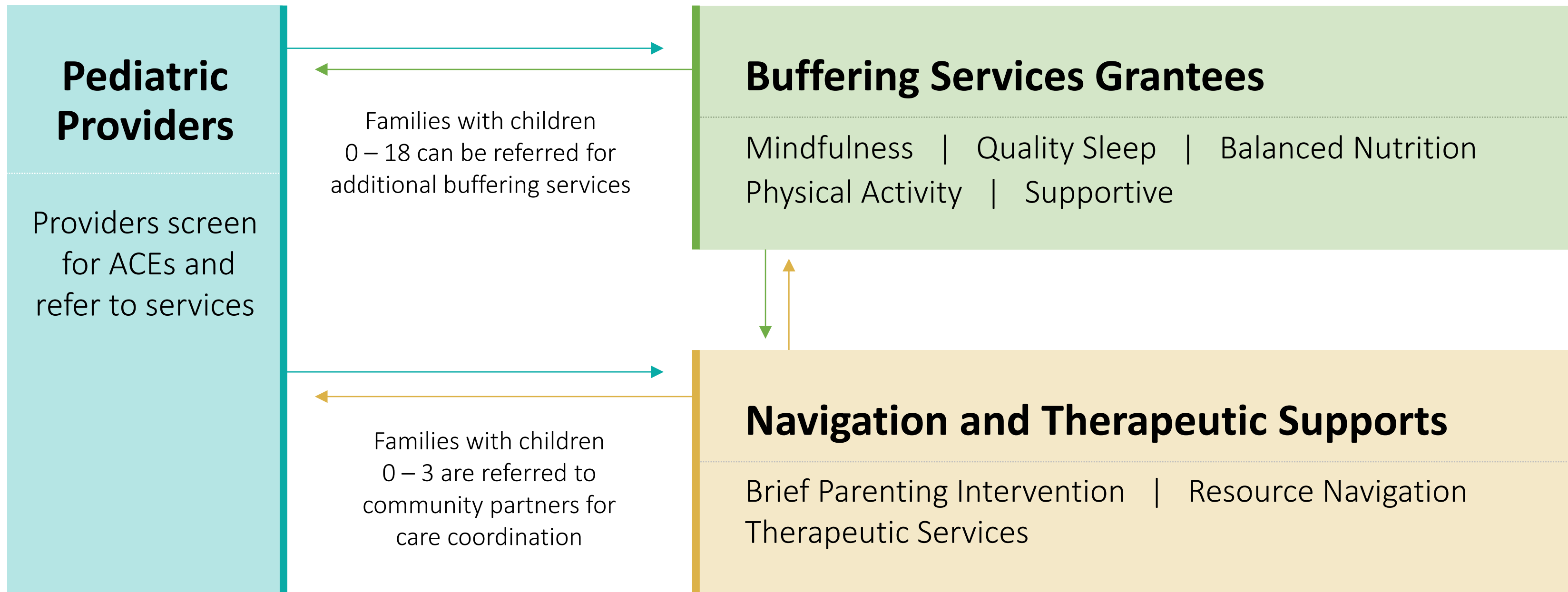
**Things grow
stronger when
you integrate.**

- DANIEL WILSON

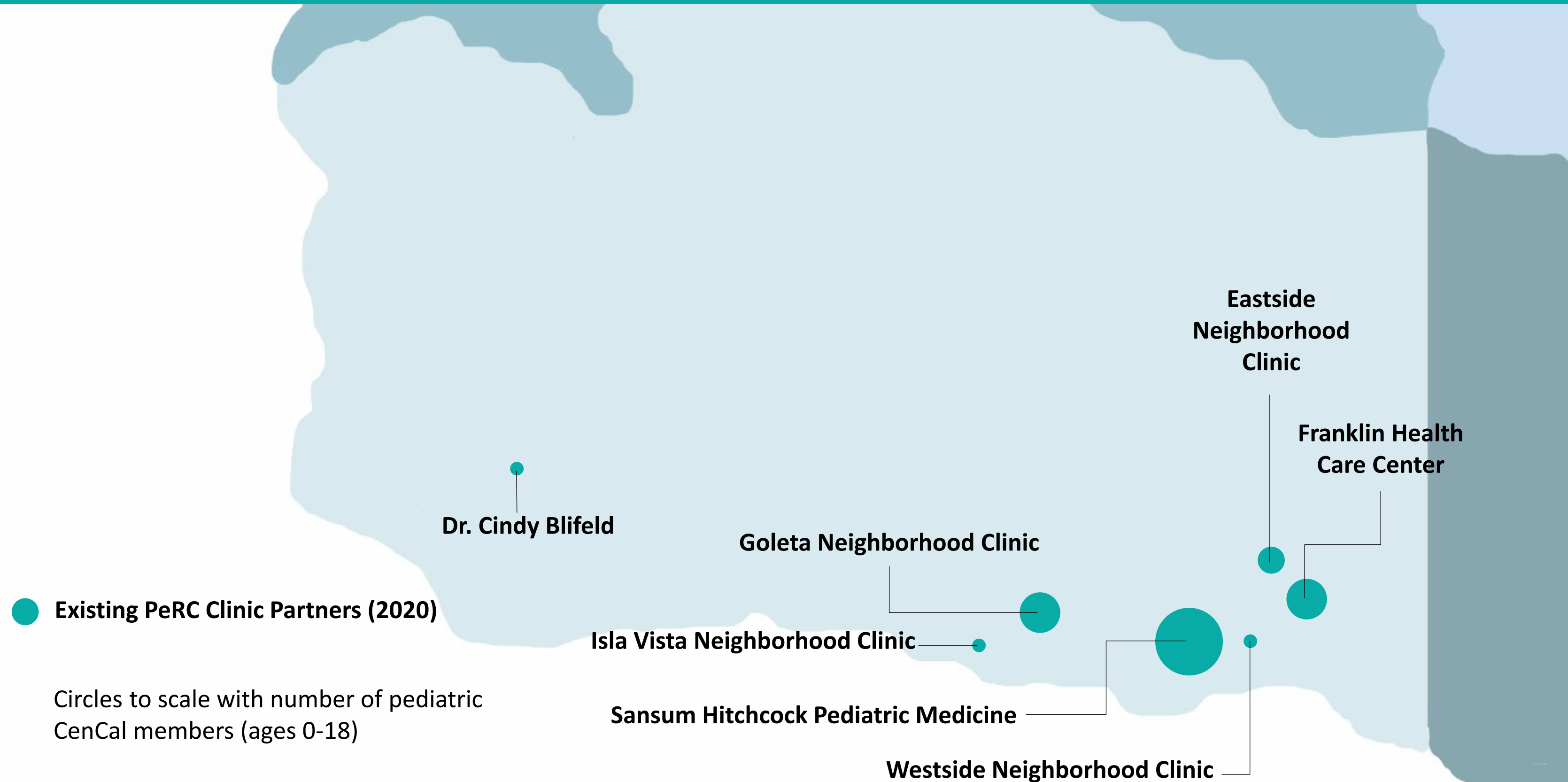
- **History** of ACEs and resiliency work Santa Barbara County
- **Bridges** to Resilience Conference and Affinity Groups
- Using core training to **build common language** and understanding across sectors

SANTA BARBARA COUNTY NETWORK OF CARE

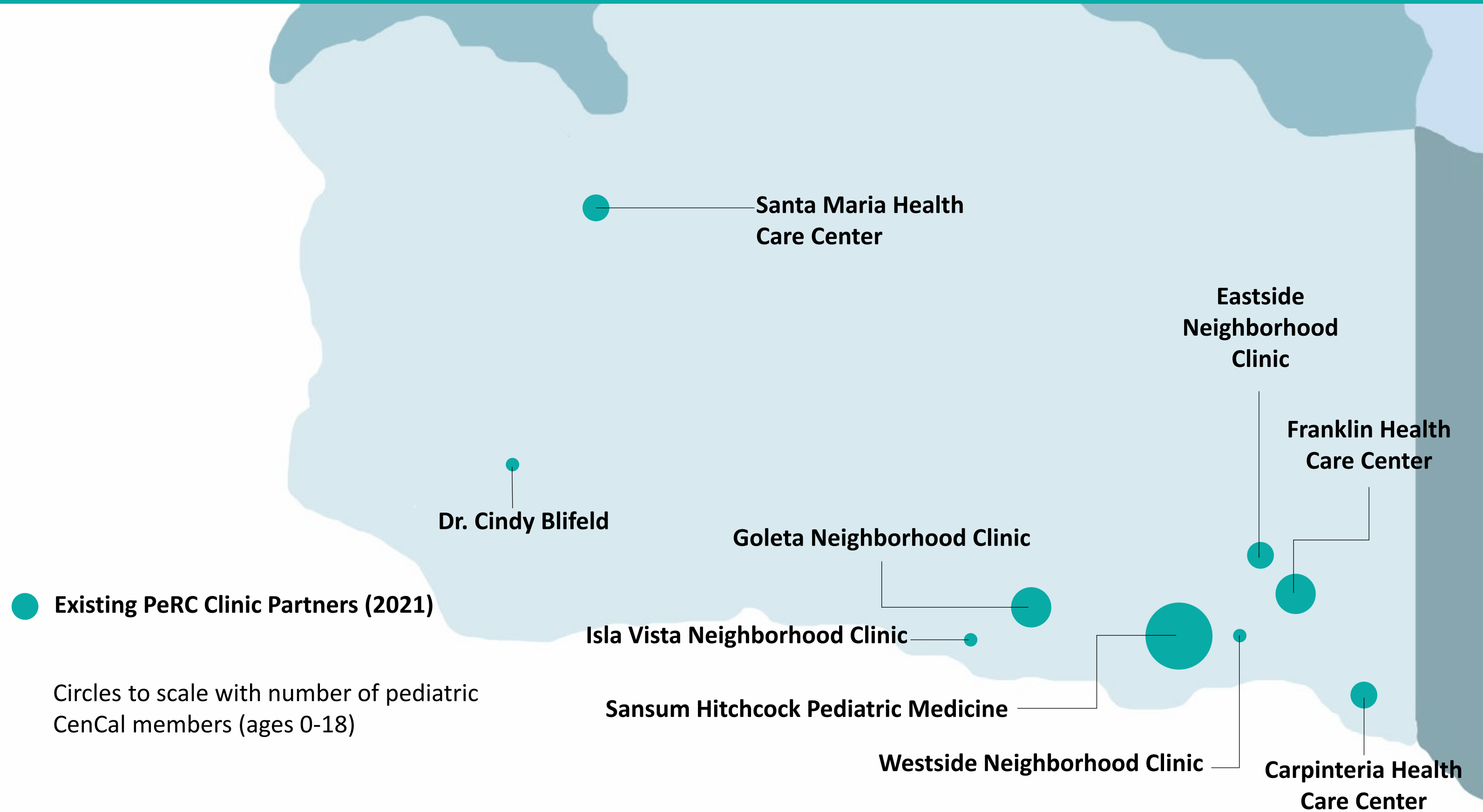
AN INTEGRATED AND ALIGNED APPROACH



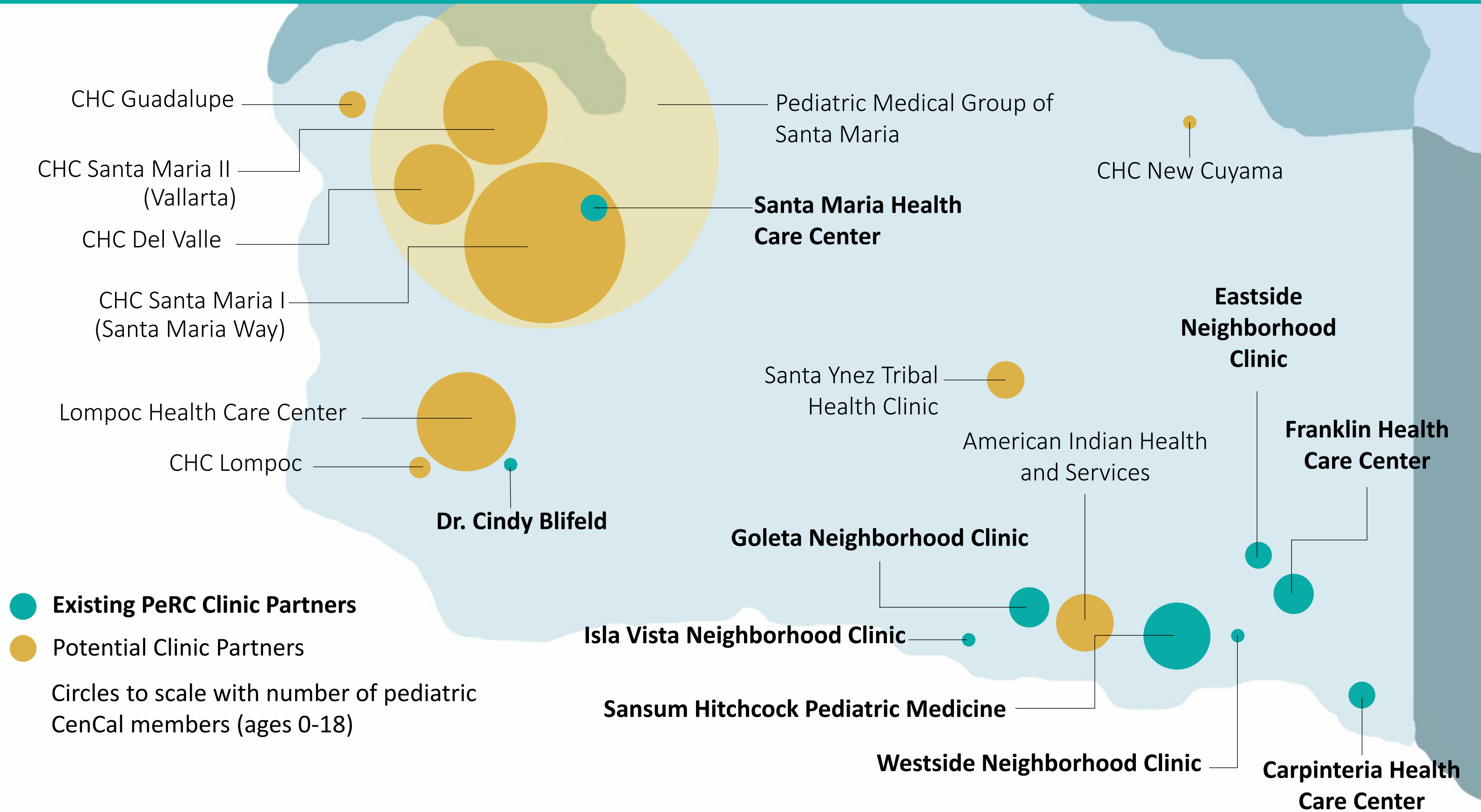
EXPANDING THE NETWORK OF CARE



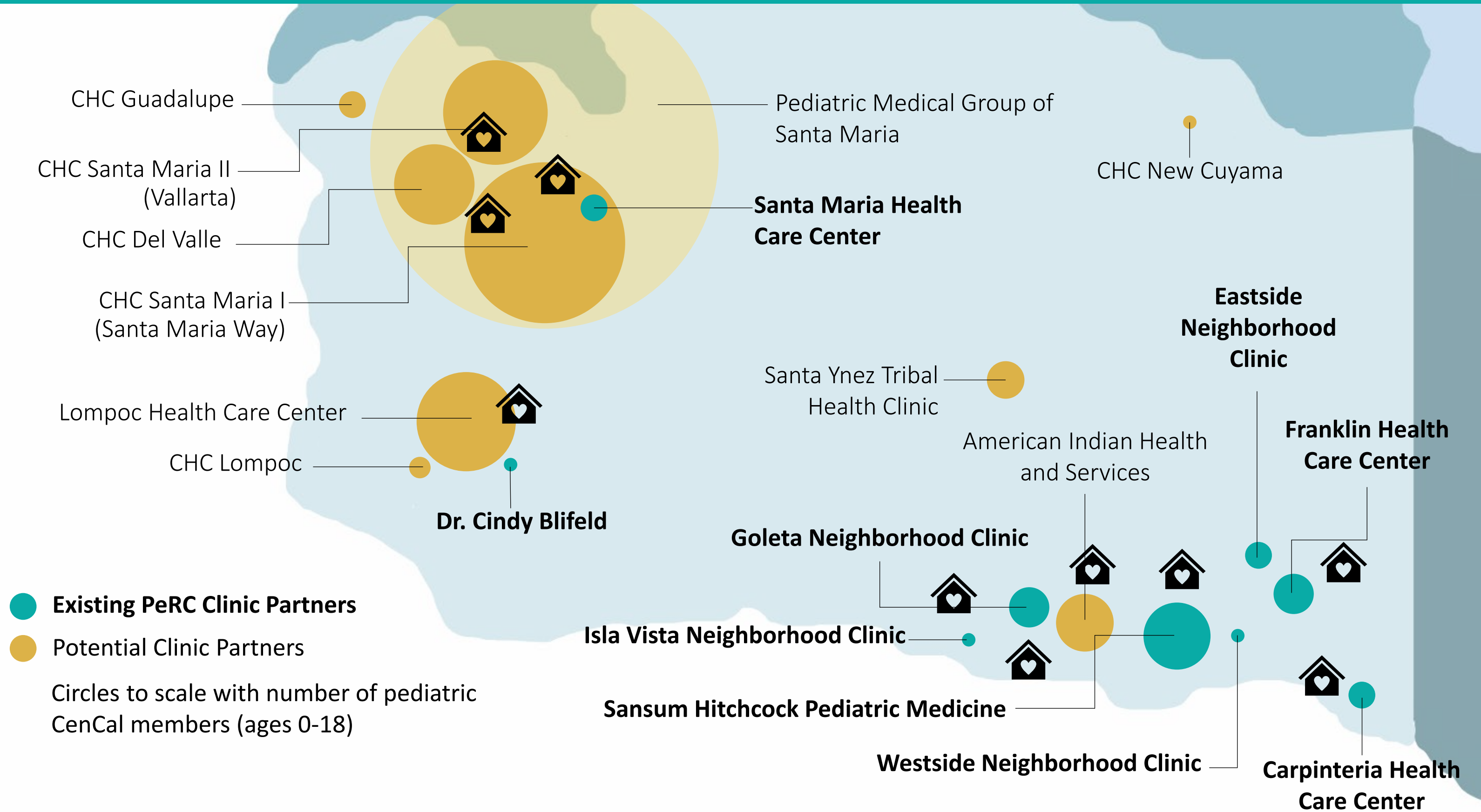
EXPANDING THE NETWORK OF CARE



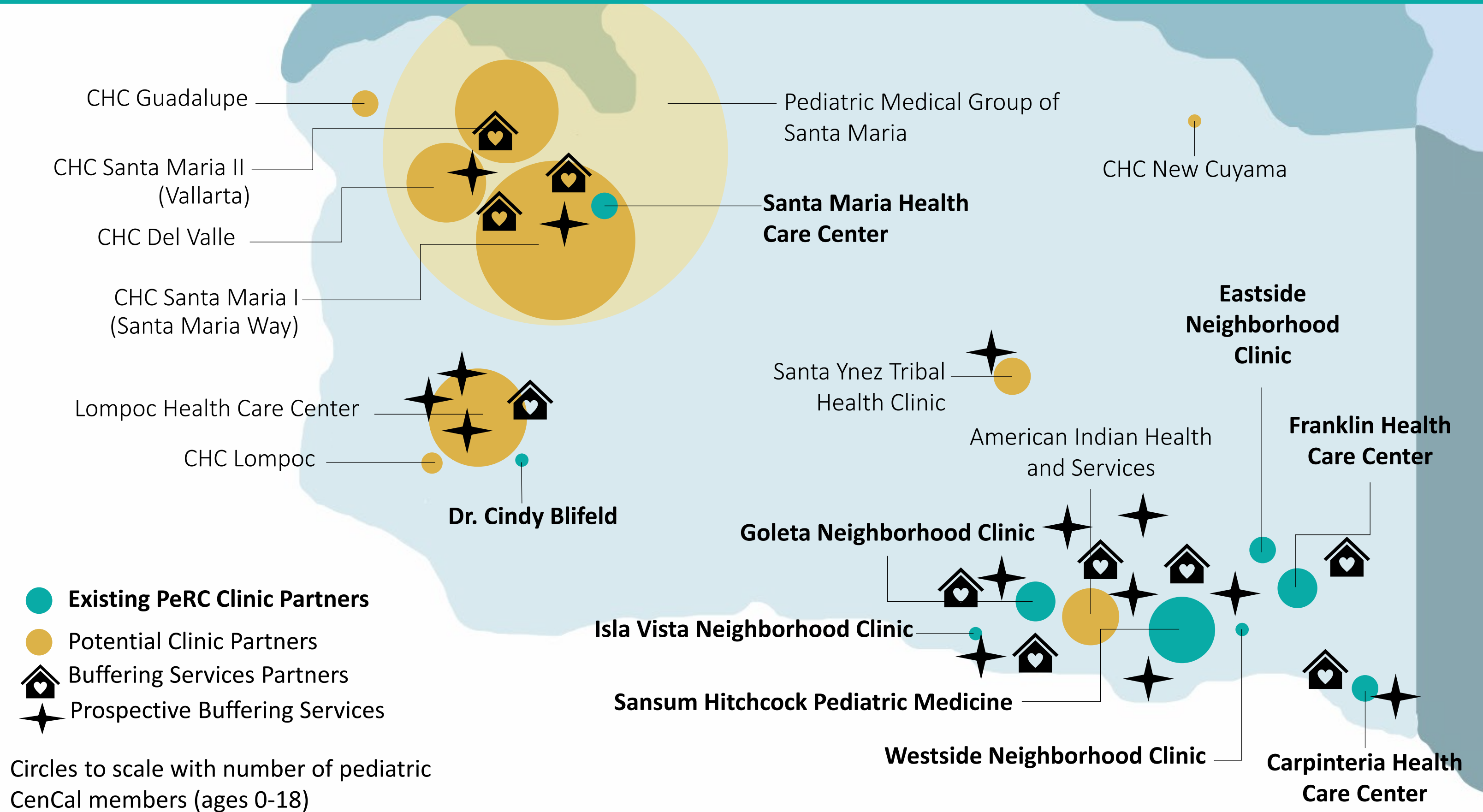
EXPANDING THE NETWORK OF CARE



EXPANDING THE NETWORK OF CARE



EXPANDING THE NETWORK OF CARE



THANK YOU

Grant Management Team:

Ama Atiedu
Barbara Finch
Dr. Andria Ruth
Dr. Peggy Dodds
Monica Ray
Megan Kenney

QUESTIONS



Pediatric Resiliency
COLLABORATIVE





Questions & Discussion



Open Questions and Group Discussion



Thank you!

