

Quarterly Progress Report

ACE Screening and Clinician Training Data

September 2025

The California Department of Health Care Services (DHCS) and the Office of the California Surgeon General are leading ACEs Aware, a first-in-the-nation, statewide effort to implement screening for Adverse Childhood Experiences (ACEs) and treat toxic stress to improve the health and well-being of Californians.

ACEs Aware offers clinical teams training, clinical protocols, and payment for screening children, adolescents, and adults for ACEs.

This quarterly progress report provides the following data:

- Number of individuals who completed the [Becoming ACEs Aware in California](#) online training between December 4, 2019, and July 31, 2025.
- Number of ACE screenings conducted in California between January 1, 2020, and September 30, 2024, based on DHCS Medi-Cal claims data.



Medi-Cal Claims for ACE Screenings

Medi-Cal clinicians conducted more than **4,545,560** ACE screenings of **2,595,320** unique Medi-Cal members.

Of the **1,986,300** unique Medi-Cal members

ages 0 to 20 screened for ACEs, **7%** had an ACE score of 4 or more.

Of the **609,020** unique Medi-Cal members

ages 21 to 64 screened for ACEs, **19%** had an ACE score of 4 or more.*

Data from: January 1, 2020, through September 30, 2024

Medi-Cal clinicians – primarily pediatric, family medicine, and behavioral health professionals – conducted 4,545,560 ACE screenings of 2,595,320 unique Medi-Cal members between January 1, 2020, and September 30, 2024. Seventy-seven percent of all screenings conducted were of members ages 0 to 20, 7% of whom had an ACE score of 4 or greater, indicating a high risk for toxic stress, and 23% of all screenings conducted were of members ages 21 to 64, 19% of whom had an ACE score of 4 or greater.

Number of people who completed the Becoming ACEs Aware in California training

49,190

Individuals completed the training

23,270

Medi-Cal clinicians are ACEs Aware-certified**

63% of participants indicated they plan to implement changes in their practice based on the information presented in the training.

Before the training

55% of participants were not screening any patients for ACEs.

After the training

63% of participants who were not previously screening patients for ACEs indicated they planned to implement routine ACE screening for children or adults.

Data from: December 4, 2019, through July 31, 2025

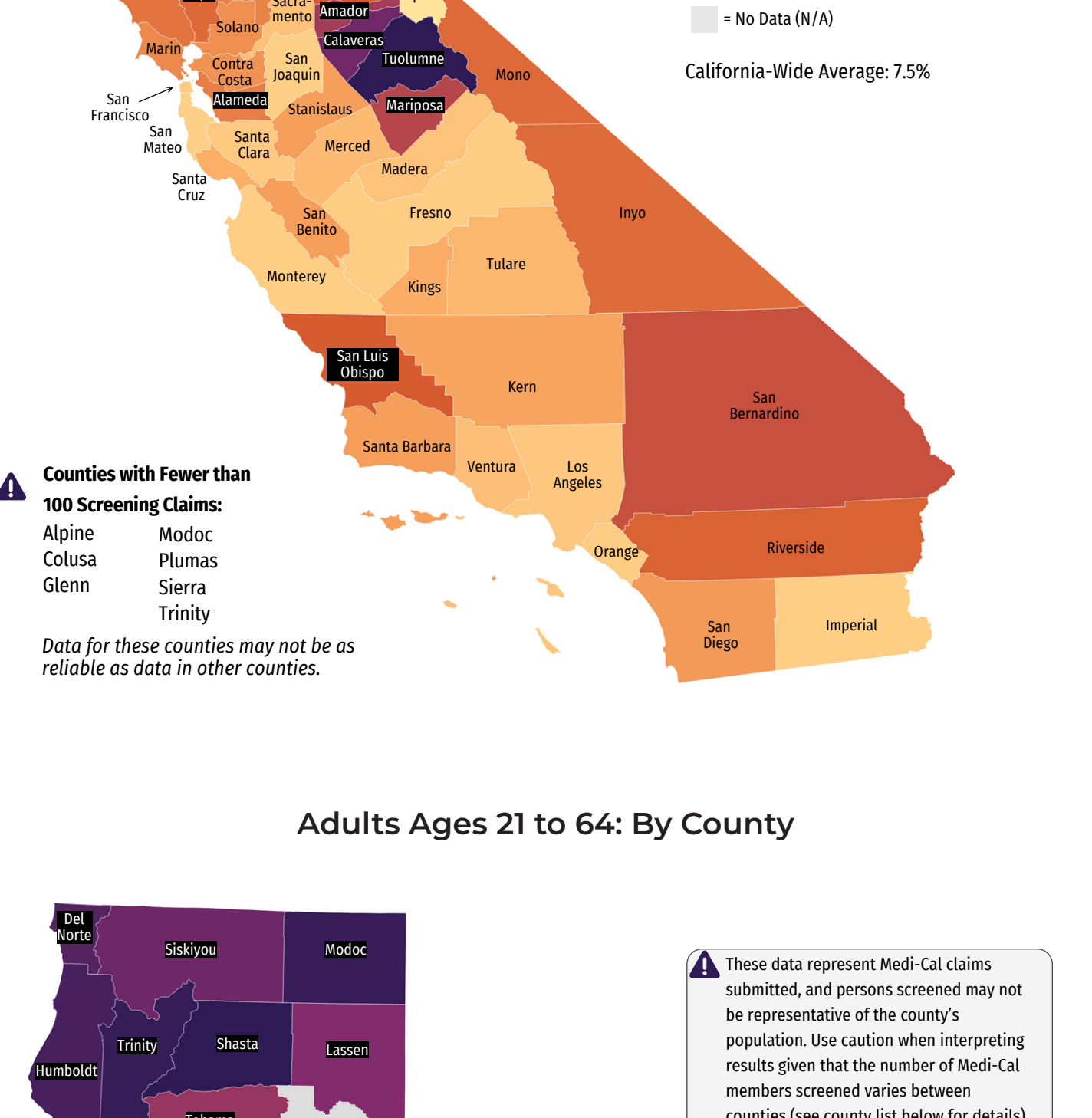
Since the launch of the ACEs Aware initiative in December 2019, more than 49,190 individuals have completed the ACEs Aware core training, including approximately 23,270 Medi-Cal clinicians in California who are ACEs Aware-certified and eligible to receive Medi-Cal payment for conducting ACE screenings.

ACEs Aware is making a difference in clinical care.

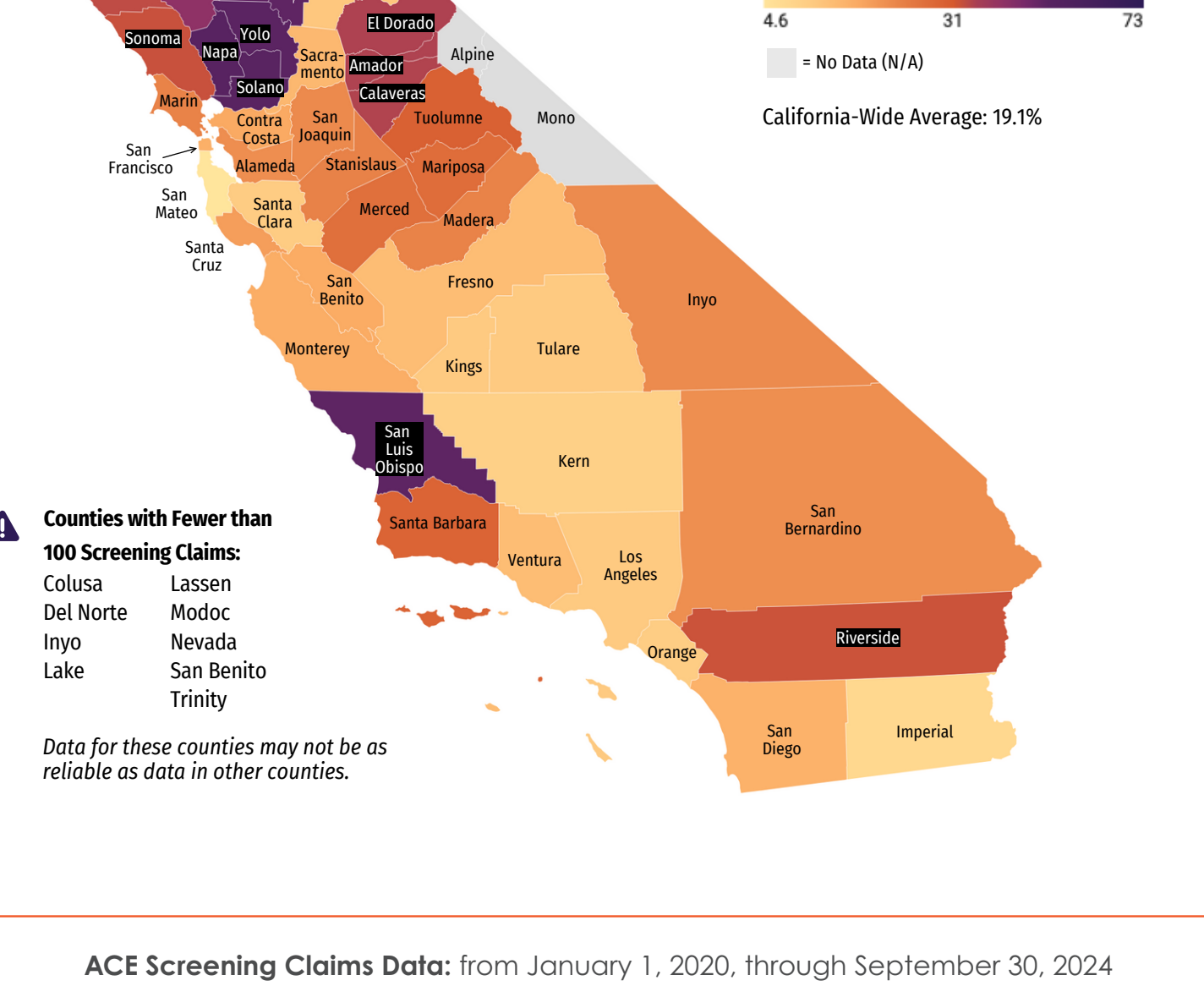
After completing the training, participants were asked about practice changes they plan to make based on the training: 63% of participants reported they plan to implement changes in their practice based on the information presented in the training; 53% reported they plan to conduct routine ACE screenings for children; 49% reported they plan to conduct routine ACE screenings for adults; and 91% reported being somewhat or very confident they would be able to make their intended practice changes. Additionally, 36% plan to change their treatment or management approach based on the patient's ACE score and toxic stress risk assessment, and 35% plan to apply a clinical algorithm on ACEs and toxic stress to guide patient care.

Percentage of Patients Screened Who Disclosed an ACE Score of 4 or More, Based on Medi-Cal Claims Data, by County

Children, Adolescents, and Young Adults Ages 0 to 20: By County



Adults Ages 21 to 64: By County



ACE Screening Claims Data: from January 1, 2020, through September 30, 2024

Notes:

Percentages are rounded to the nearest whole number and may not add up to 100%.

Data Extraction Date: June 27, 2025, from the DHCS Management Information System/Decision Support System (MIS/DSS) data warehouse

"N/A" percentage of high-risk ACE scores means data have been suppressed in instances where values were at least one but less than 11, or whereby related data with values less than 11 not presented here could be deduced from the information in this map.

*ACE score refers to the total disclosed exposure to the 10 ACE categories. An ACE score of 4 or greater indicates that patients may be at high risk for toxic stress. Patients with an ACE score of 0 to 3 may also be at risk for toxic stress.

**Medi-Cal clinicians must attest to completing a certified ACEs Aware core training to qualify for Medi-Cal payment. The methodology has been revised to count unique Medi-Cal clinicians and is not comparable to quarterly reports prior to October 2022.

ACE Screenings by Medi-Cal Managed Care Plan (MCP) Network

Children, Adolescents, and Young Adults (ages 0 to 20): MCP clinicians screened 1,681,396 individuals, representing 29% of unique Medi-Cal members 20 years of age and younger who were enrolled with a single plan in any continuous 12-month period between January 1, 2020, and September 30, 2024 (and were not dually eligible for Medi-Cal and Medicare). Fee-for-service (FFS) clinicians screened 9% of Medi-Cal members who were not enrolled in any plan during the measurement period (Exhibit 1).

Exhibit 1: ACE Screenings for Members Ages 0 to 20 by Medi-Cal MCP (January 1, 2020, through September 30, 2024)

MCP	Number of Members Screened	Medi-Cal Enrollment	Percentage of Medi-Cal Population Screened
Aetna Better Health of California	2,702	19,405	13.9%
Alameda Alliance for Health	42,331	121,650	34.8%
Blue Cross of California Partnership Plan	93,170	439,383	21.2%
Blue Shield of California Promise Health Plan	12,988	41,543	31.3%
CalOptima	198,944	374,046	53.2%
CalViva Health	46,206	214,602	21.5%
California Health & Wellness Plan	9,046	108,752	8.3%
CenCal Health	32,663	107,549	30.4%
Central California Alliance for Health	56,253	203,611	27.6%
Community Health Group Partnership Plan	46,805	149,191	31.4%
Contra Costa Health Plan	7,506	97,625	7.7%
Gold Coast Health Plan	27,606	111,280	24.8%
Health Net Community Solutions, Inc.	195,076	708,779	27.5%
Health Plan of San Joaquin	29,574	218,172	13.6%
Health Plan of San Mateo	12,343	61,502	20.1%
Inland Empire Health	351,929	766,941	45.9%
Kaiser Permanente Cal, LLC	35,245	93,008	37.9%
Kern Health Systems	39,573	180,599	21.9%
L.A. Care Health Plan	297,226	1,016,229	29.2%
Molina Healthcare of California Partner Plan, Inc.	66,643	246,746	27.0%
Partnership HealthPlan of California	39,920	276,167	14.5%
San Francisco Health Plan	11,072	52,460	21.1%
Santa Clara Family Health Plan	25,491	129,502	19.7%
United Healthcare Community Plan	1,084	8,640	12.5%
Total – MCP	1,681,396	5,747,382	29.3%
Total – FFS	35,616	378,122	9.4%

Adults (Ages 21 to 64): MCP clinicians screened 513,978 individuals, representing 6% of unique Medi-Cal members ages 21 through 64 who were enrolled with a single plan in any continuous 12-month period between January 1, 2020, and September 30, 2024 (and were not dually eligible for Medi-Cal and Medicare). FFS clinicians screened less than 1% of Medi-Cal members who were not enrolled in any plan during the measurement period (Exhibit 2).

Exhibit 2: ACE Screenings for Members Ages 21 to 64 by Medi-Cal MCP (January 1, 2020, through September 30, 2024)

MCP	Number of Members Screened	Medi-Cal Enrollment	Percentage of Medi-Cal Population Screened
Aetna Better Health of California	1,971	37,267	5.3%
Alameda Alliance for Health	902	194,579	<1%
AltaMed	--	936	--
Blue Cross of California Partnership Plan	24,072	622,378	3.9%
Blue Shield of California Promise Health Plan	9,846	99,611	9.9%
CalOptima	37,830	569,431	6.6%
CalViva Health	18,031	238,987	7.5%
California Health & Wellness Plan	1,034	143,552	<1%
CenCal Health	3,595	126,848	2.8%
Central California Alliance for Health	18,108	228,207	7.9%
Community Health Group Partnership Plan	20,201	210,136	9.6%
Contra Costa Health Plan	--	143,221	--
Gold Coast Health Plan	7,809	139,348	5.6%
Health Net Community Solutions, Inc.	54,712	1,019,049	5.4%
Health Plan of San Joaquin	4,875	243,253	2.0%
Health Plan of San Mateo	1,343	87,268	1.5%
Inland Empire Health	176,559	937,117	18.8%
Kaiser Permanente Cal, LLC	993	104,709	<1%
Kern Health Systems	11,059	197,886	5.6%
L.A. Care Health Plan	77,989	1,618,424	4.8%
Molina Healthcare of California Partner Plan, Inc.	29,720	346,022	8.6%
Partnership HealthPlan of California	10,181	403,705	2.5%
San Francisco Health Plan	487	121,520	<1%
Santa Clara Family Health Plan	1,022	186,656	<1%
United Healthcare Community Plan	1,215	18,493	6.6%
Total – MCP	513,978	8,042,185	6.4%
Total – FFS	9,742	1,669,637	<1%

Notes:

"Number of Members Screened" and "Medi-Cal Enrollment" are rounded to the nearest 10 and may not sum to the total.

"Percentage Medi-Cal Population Screened" is rounded to the nearest whole percent.

"Number of Members Screened" is the count of distinct non-dual individuals who were enrolled in a single plan in any continuous 12-month period and received an ACE screening during the measurement period.

"Medi-Cal Enrollment" is the count of distinct non-dual individuals who were enrolled in a single plan for any 12 continuous months during the measurement period.

Cells with "--" have been suppressed in instances where values were at least one but less than 11, or whereby related data with values less than 11 not presented here could be deduced from the information in this table.

The screens in this report are collected by capturing claims utilizing the designated G9919 and G9920 codes for ACE screenings. Any additional screenings that were not documented with these codes would not be counted in this report.

Data Extraction Date: June 27, 2025, from the DHCS MIS/DSS data warehouse.